

ELISA™

Emilie™ & Rosa™



Installation, User and Care Guide

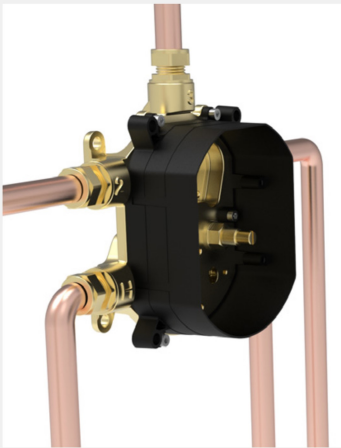
Installation Stages

Thank you for choosing an Elisa product to enhance your bathroom design.

The installation of this product is a 3 stage process:

Stage 1

Fitting the Aquahub and preparation for outlet accessories



Stage 2

Fitting the valve assembly



Stage 3

Fitting the compression plate and fascia



This guide covers the installation of Stages 2 and 3

This booklet provides information for Stages 2 and 3, please refer to the separate installation guides for Stage 1 and outlet accessories.

The outlet accessories guides will provide helpful information so you can plan the pipe runs and terminate in the required fittings/connectors.

Installation and user guides are packed with all of our products and for your convenience they are also available by visiting elisabathrooms.com.

Contents

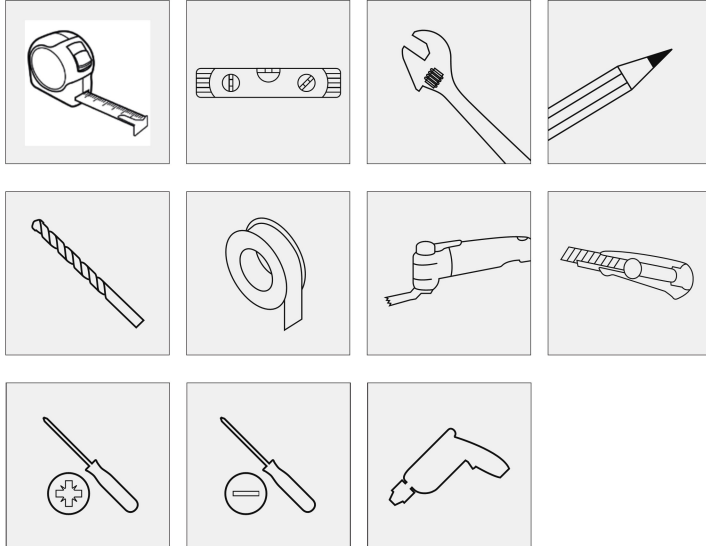
- 4 Tools Required
- 4 Components - Emilie
- 5 Components - Rosa
- 6 Preparation
- 7 Fitting the thermostatic valve assembly
- 8 Fitting the headworks (Push button)
- 9 Commissioning the headworks and fitting the cover plate (Push button models)
- 10 Fitting the control dial (Push button models)
- 11 Changing cover buttons (Dual outlet push button models only)
- 11 Fitting the headworks (Dial models)
- 12 Commissioning and fitting the cover plate (Dial models)
- 13 Fitting the control dials (Dial models)
- 14 Troubleshooting
- 17 Caring for your Shower
- 18 Maintenance
- 19 User Instructions



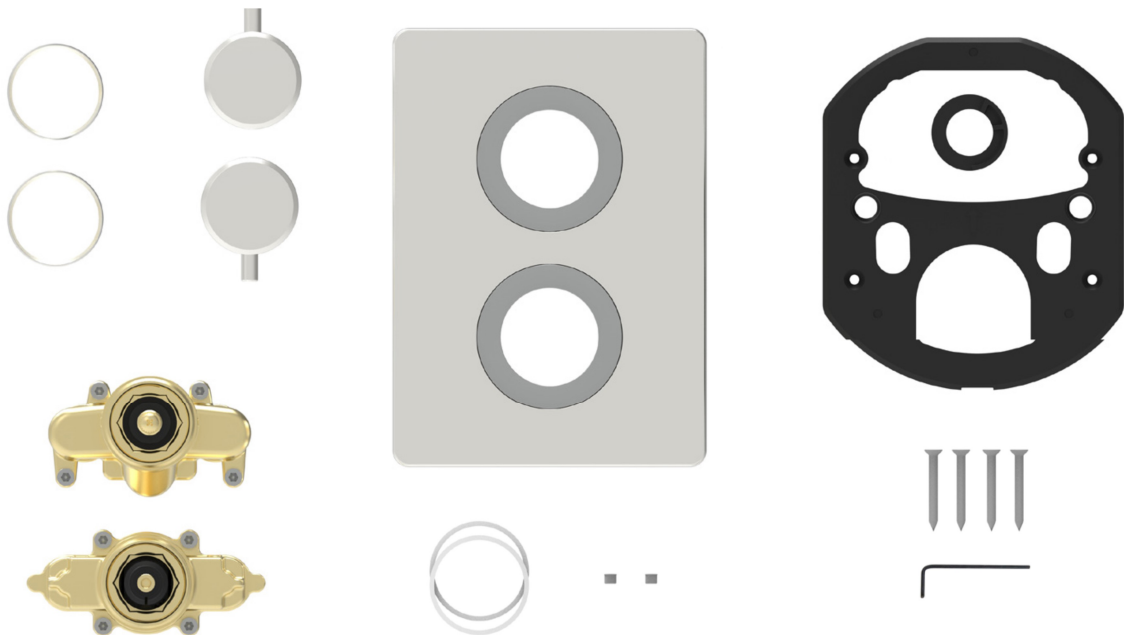
Important Information

This product must be installed by a competent person in accordance with the relevant Water Supply Regulations. Prior to installation, ensure all literature supplied with this product is read and understood. We have taken great care to ensure that this product reaches you in perfect condition, however, should any parts be damaged or missing please contact your point of purchase. If you require assistance, please contact the Customer Helpline. The Aquahub is supplied with universal fixings intended to secure it to a suitable surface.

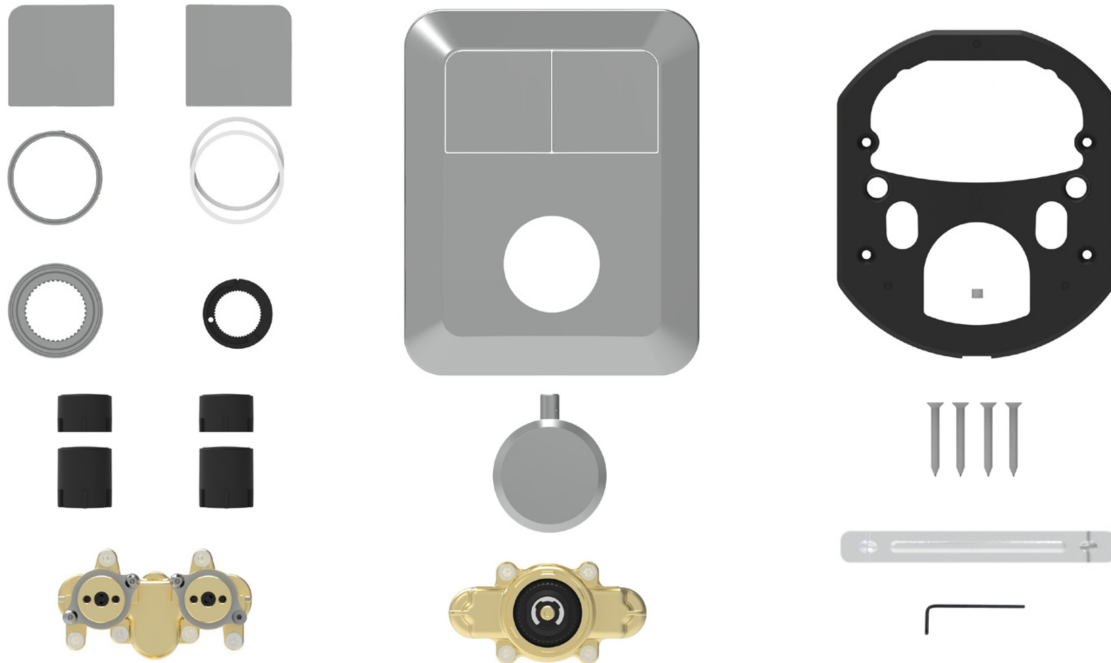
Tools Required



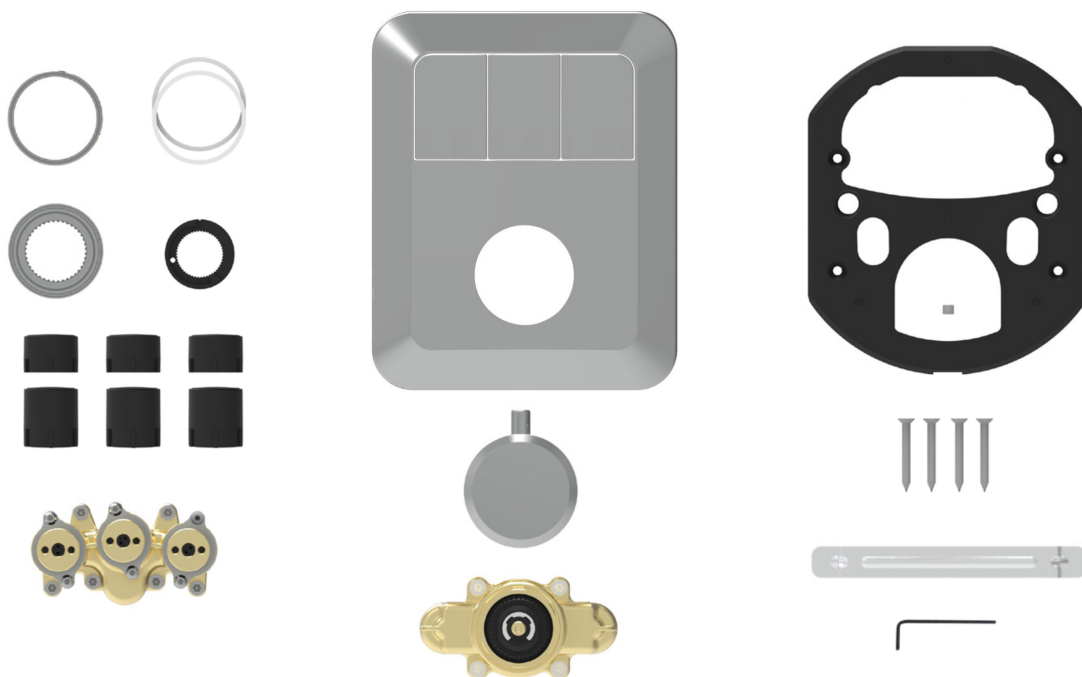
Components - Rosa



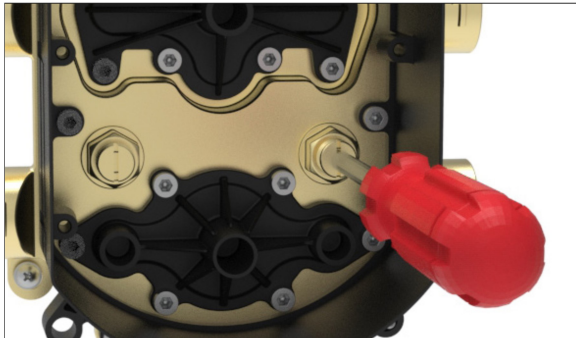
Components - Emilie Dual Outlet



Components - Emilie Triple Outlet



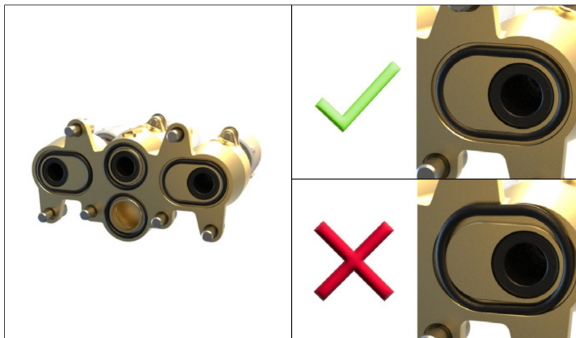
Preparation



1. Once all stage 1 leak and pressure tests have been carried out; before proceeding with the following instructions, ensure that the built-in servicing valves are in the closed position (screwed down).



2. Remove the pressure testing plates by unscrewing the bolts with the long allen key provided.



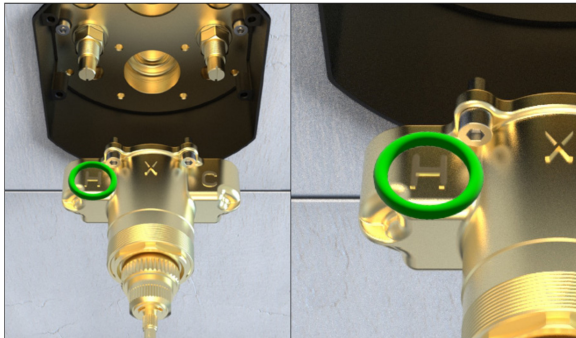
Ensure all O’rings are installed and within the grooves of the valve assembly.



For push button models. Screw the black extension caps onto the headworks. (Use the shorter ones for 60-70mm installation depths OR the longer ones for 70-80mm installation depths.)

Fitting the thermostatic valve assembly

(All models)

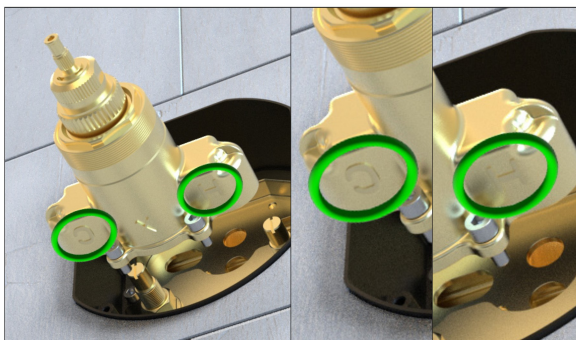


Offer the thermostatic assembly up to the Aquahub body and secure into place using the long allen key provided and the bolts.

Tighten all bolts incrementally in a clockwise manner until tight.



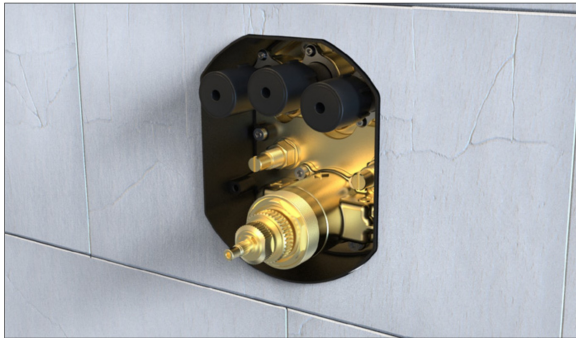
Ensure 'H' (as circled) is on the hot water inlet side (normally left-hand side as viewed from the front).



If the water supplies are reversed or have been plumbed incorrectly, the shower will not blend the water correctly as the supplies do not correspond with the inlets of the thermostatic assembly.

This can be easily corrected by installing the assembly upside-down (so the 'H' and 'C' is on the bottom) - as shown.

Fitting the headworks (Push button)

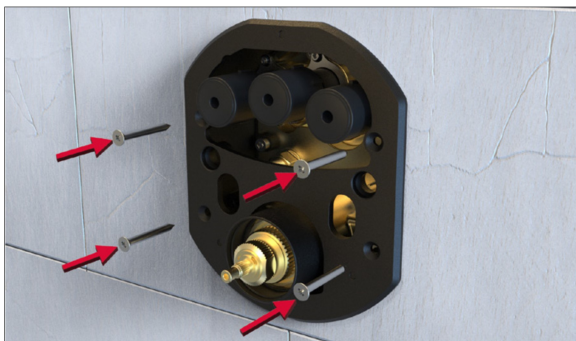


1. Offer the headworks up to the Aquahub body and secure into place using the long allen key provided and the bolts.

Tighten all bolts incrementally in a clockwise manner until tight.



2. Install the dial shroud by rotating it onto the threaded headwork.



3. Install the compression plate using the screws provided.

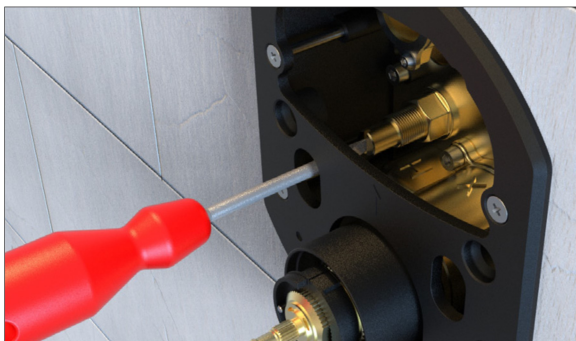
Commissioning the headworks and fitting the cover plate (Push button models)



1. Ensuring the buttons are not depressed, (in their fully extended position) place the button adjustment bracket on top.



2. Unscrew the buttons until they touch the bracket. Ensure all buttons are level and remove the bracket.

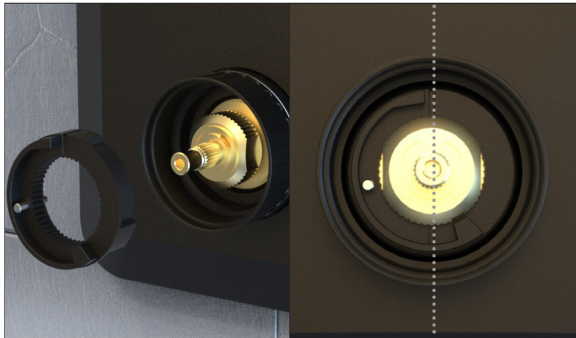


3. Open both built-in servicing valves (unwind – counter clock-wise).



4. Press the cover plate into position.

Fitting the control dial (Push button models)



5. Fit the white spacer ring and flow control dial before placing the temperature override cam onto the shaft. Ensuring it is in the correct orientation (vertical – as shown).



6. Place the second white spacer and the temperature dial onto the shaft, with the pin vertically aligned.



7. Using the small allen key provided, tighten the grub screw to secure the dial, then press in the silicone cap. Open the water isolation valves and test.



Note: Silicone can be applied around the wall plate apart from the drainage hole at the bottom. This must be left uncovered.

Changing cover buttons (Dual outlet (push button) models only)

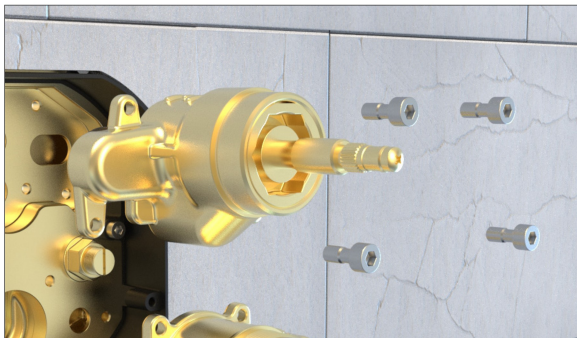


The buttons can be swapped to correlate to your specific outlets if they do not match. At the rear of the cover, use a flat bladed screwdriver to pry off the buttons then press the new ones in place. (Press against the areas highlighted in red in the picture opposite)



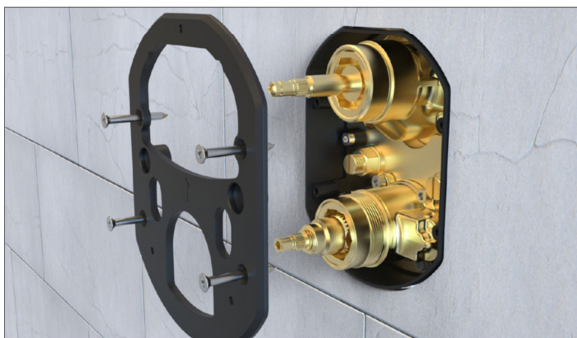
Note: Spare alternative buttons are available should the outlets be plumbed incorrectly, according to the button graphics. Please contact customer services.

Fitting the headworks (Dial models)



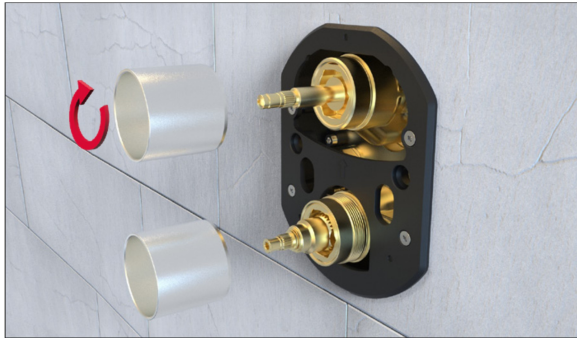
1. Offer the on/off headworks up to the Aquahub body and secure into place using the long allen key provided and the bolts.

Tighten all bolts incrementally in a clockwise manner until tight.

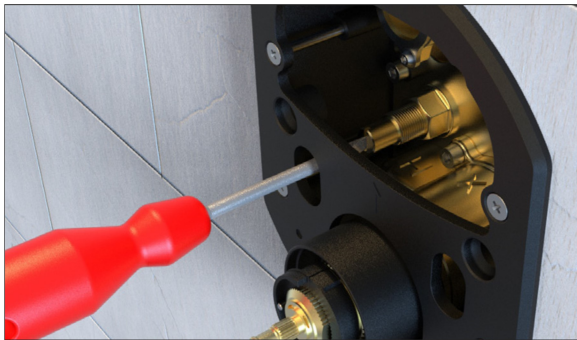


2. Install the compression plate using the screws provided.

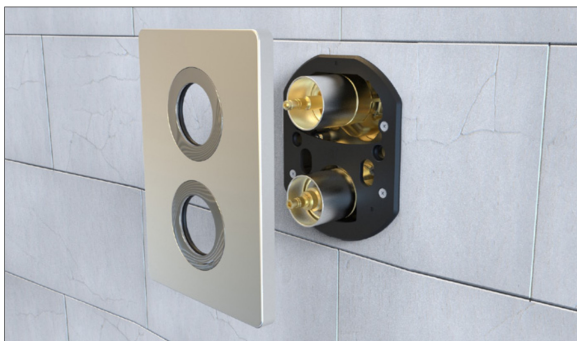
Commissioning and fitting the cover plate (Dial models)



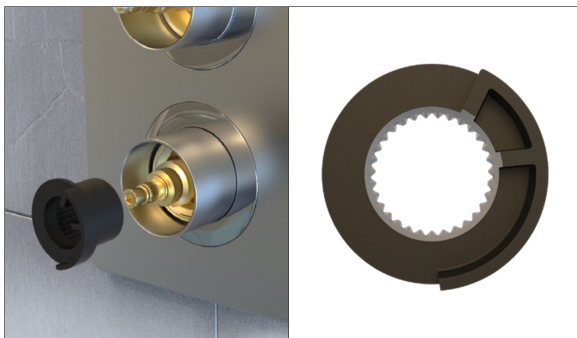
3. Install the dial shrouds by rotating them onto the threaded headworks.



4. Open both built-in servicing valves (unwind – counter clock-wise).



5. Press the cover plate into position.



6. Fit the temperature override cam onto the large spline ensuring that it is in the correct orientation (as shown).

Fitting the control dials (Dial models)



7. Fit the white spacer rings and control dials.

Override button needs to be pressed in when fitting the temperature control knob/dial.



8. Using the allen key supplied, tighten the grub screw to secure the control dial.



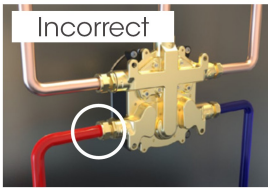
9. Insert the silicone cover cap, then open the water isolation valves and test.





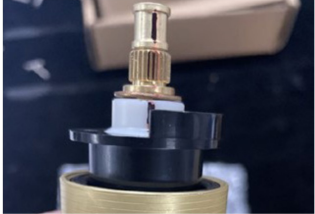

Note: Silicone can be applied around the wall plate apart from the drainage hole at the bottom. This must be left uncovered.

Troubleshooting

Problem	Solution
<p>Water Leaks</p>	<p>If the Aquahub or headworks have been incorrectly installed, leaks could occur down or within the wall.</p> <p>*Turn off the mains water supply*</p> <p>Fully close the built in service valves, make sure the servicing valves are tightened securely into the aquahub.</p> <p>Check all inlets and outlets have been fitted with ptfе tape.</p> <p>Check all headwork O’Rings are installed correctly and not perished.</p> <p>Check blanking plugs have been applied to the correct/un-used outlets</p> <p>Check the thermostatic cartridge and diverter cartridge/valves are secure.</p> <p>Check outlet plumbing.</p> <p>Perform pressure and leak testing - refer to Aquahub installation guide (stage 1 installation).</p>
<p>Water is only fully hot OR fully cold</p>	<p>If the inlets have been plumbed in incorrectly, the shower will only dispense fully hot OR fully cold water. Despite turning the temperature dial, the water will not blend to a showering temperature.</p> <p>You have probably plumbed the water supplies into the wrong inlets.</p> <p>This can be easily corrected by installing the headworks upside-down (so the ‘H’ and ‘C’ are on the bottom) see page 7.</p> <p>Now the inlets have been switched and your thermostatic cartridge should work correctly.</p>



Troubleshooting

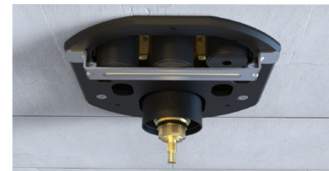
Problem	Solution
<p>Dial not fully rotating</p>	<p>Remember to depress the pin in order to allow full rotation and achieve temperatures over 38 degrees.</p> <hr/> <p>If depressing the pin is not helping, its possible you have installed the temperature override cam incorrectly (see page 10 or 12).</p>   <p>Or your dial may not be aligned with the cartridge. In this case, make sure the markings on the teeth are aligned and then place your dial on so the pin is vertical.</p> 
<p>Shower is not working</p>	<p>You may have forgotten to open the service valves within the aquahub /on the incoming pipework or left your stop cock (mains water supply valve) closed.</p> <p>Remove the faceplate and fully loosen the isolation valves. (The valves will unscrew and protrude out when loosened). see page 9 or 12</p> <p>If this has not solved the issue, check your mains supply valve and external isolation valves on your incoming pipework.</p> 



Contact customer services for information on replacement parts.

Troubleshooting

Problem	Solution
<p>Buttons not working</p>	<p>If the wrong extension bosses have been screwed on, the buttons will not fully depress or disengage the valves behind.</p> <p>Remove the faceplate and compression plate.</p> <p>Unscrew the black extension bosses and replace with the longer spare set. (see page 6).</p> <p>Readjust them to the correct depth using the metal bracket. (see page 9).</p>
<p>Faceplate not sitting flush with the wall</p>	<p>You may have incorrectly installed the Aquahub shroud, button extension bosses or compression plate, which will prevent the faceplate from sitting flush with the wall.</p> <p>Check the compression plate is sitting flush with the tiles. If not, remove it and check the plastic shroud behind has been trimmed flush to the wall (It should not protrude more than 2-3mm past the finished wall surface). If the shroud seems ok, make sure the compression plate is located on the shroud correctly and is screwed down tight against the wall.</p> <p>Lastly, if this has not corrected the problem, it is likely that you have installed the wrong button extension bosses. Unscrew them and replace with the shorter set. Then readjust using the metal bracket supplied. (see page 9).</p>



Caring for your Shower

- Cleaning and maintenance should not be undertaken by children without supervision by a person responsible for their safety.
- Over time, your shower may be affected by hard water scaling.
- To keep your shower working effectively, we recommend that you clean your shower regularly.
- Your product should be cleaned using only a soft cloth and soapy water.



DO NOT USE ABRASIVE CLEANING PRODUCTS. It is imperative that cleaning and descaling is carried out in accordance with the manufacturer's instructions, substances that are not suitable for plastics, painted surfaces, and electroplated surfaces must not be used.

The use of abrasive cleaning agents and cloths will damage the finish of your product and this is not covered by the guarantee.

Care should be taken when using "spray on" products to clean the shower area as overspray can make contact with the shower components and if not washed off can cause damage.



Cleaning Tip

- To keep your shower effortlessly clean, we recommend drying all shower components with a soft cloth after use. Your product can be cleaned using only a soft cloth and soapy water.

Maintenance

Regular Maintenance

- Remove and clean the control dials to remove any build-up of limescale etc. Ensure the temperature override pin depresses easily and is clear of any deposits.
- Thoroughly clean the faceplate and ensure the drainage channel underneath is open and free of residue

Annual Maintenance

- Isolate all water supplies to your shower
- Remove and thoroughly clean the control dials and faceplate.
- Remove the headworks and filters within, flush with hot water and clean before reinstalling. Extract the cartridge and valve, clean the water channels and cavities with a small brush, checking for any signs of limescale build up etc and clean until removed. Soaking the cartridge/valve in white vinegar for 60 minutes will help remove the limescale. Rinse thoroughly once soaked and check all O’rings are non-perished/located correctly before reinstalling the headworks and cartridge
- Turn the isolation valves to ensure they are not stuck in position and return to fully open.
- Clean the plastic Aquahub shroud inside, ensuring there is no mineral build up at the bottom.
- Re-install the faceplate and dials according to the installation guide steps.
- Open the water supplies and check the shower is working proficiently.



User Instructions

Dial models

Turning On and Off (Top dial):

- Rotate the dial to select the required outlet; for multi outlet products the outlet selection can be changed during showering, with off positions between each outlet. Note the flow will be reduced/increased as the dial is turned towards the off/outlet position respectively.

Adjusting temperature (Bottom dial):

- To increase the output temperature, rotate the dial anti-clockwise. For temperatures over 38°C, the pin can be depressed so that the dial can rotate past vertical (CAUTION as this may cause scalding!).
- To lower the output temperature, rotate the dial clockwise.

Flow control (Top Dial):

- To reduce the flow, slowly rotate the dial towards the off position. Max flow is achieved when the dial is pointing to the outlet.

Push button models

Turning On and Off:

- Push and fully depress the required button to select the desired outlet, pressing again will stop the outlet. Outlet selection can be changed during showering and multiple outlets can be run simultaneously.
- Note: Whilst the shower is running, pressing another outlet button does not automatically shut the outlet already in use, this must be pressed (de-selected) to turn off.

Adjusting temperature (Bottom dial):

- To increase the output temperature, rotate the dial anti-clockwise. For temperatures over 38°C, the pin can be depressed so that the dial can rotate past vertical (CAUTION as this may cause scalding!).
- To lower the output temperature, rotate the dial clockwise.

Adjusting flow control (Ring behind temperature dial):

- Flow can be adjusted between 0 and 100% by rotating the dial clockwise

www.elisabathrooms.com

The Flyers Way, Westerham, Kent TN16 1DE, UK

Register your guarantee instantly at
www.elisabathrooms.com/guarantee

Speak to our Customer Service team on
01959 560003



The company reserves the right to alter, change or modify the product specifications without prior warning.

Q5780 Part No 706446 Issue 01 - June 22