

ELISA™

Fixed Arms for Drencher Heads



Installation & Care Guide



Important Information

This product must be installed by a competent person in accordance with the relevant Water Supply Regulations.

Prior to installation, ensure all literature supplied with this product is read and understood. We have taken great care to ensure that this product reaches you in perfect condition, however, should any parts be damaged or missing please contact your point of purchase. If you require assistance, please contact the Customer Helpline.

The wall mounted shower arm is supplied with universal fixings intended to secure it to a suitable wall. The Easy Fit ceiling mounted arm is supplied with screws for fixing the product to a noggin. **A NOGGIN MUST BE USED AS PART OF THIS INSTALLATION.**

Push Fit Wall Mounted

Components



Drencher head
supplied/purchased separately



Assembled model shown
for illustrative purposes

Push Fit Wall Mounted

1. Run a 15mm outlet pipe from the shower valve to the preferred position for the fixed head.
2. Cut the outlet pipe to the finished length (55mm-150mm measured from the finished wall surface) using a suitable cutter. If a hacksaw is used, the pipe end must be carefully de-burred and chamfered.
3. Offer the fixed head arm over the projecting pipework and ensuring it is visibly straight, mark the four fixing points.
4. Remove the fixed head arm and drill and prepare using the fixings provided (if suitable) taking care to avoid pipework hidden in the wall.
5. Ensuring the pipe is clean and free of dust, slide the wall spacer followed by the fixing bush onto the pipe flush with the finished wall surface.
Note: the fixing bush contains a gripper ring and once fitted cannot be removed by pulling. If damaged or compromised, please contact the Customer Helpline for a replacement.
6. Fit the 15mm 'O' ring against the end of the fixing bush. Lubricate the 'O' ring using a suitable silicone based lubricant.



The 'O' ring must be positioned on the 15mm pipe flush to fixing bush, not onto the fixing bush shaft.

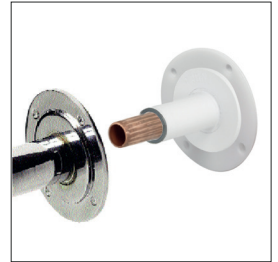


Push Fit Wall Mounted

7. Refit the shower arm and secure it to the wall using the screws provided (if suitable).



Run the shower for a few seconds to clear any debris and to check for any leaks.

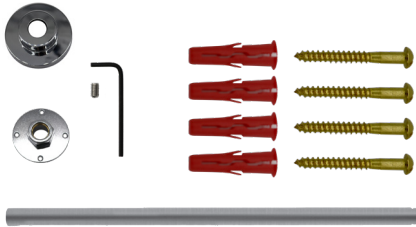


8. Slide the cover plate into position flush with the finished wall surface.



Easy Fit (450mm) Ceiling Mounted

Components



Drencher head supplied / purchased separately



Assembled model shown for illustrative purposes

1. Run a 15mm outlet pipe from the SmartValve or diverter (where supplied) to the preferred position for the fixed head.
2. Locate the position for the fixed head in the bathroom and firstly drill a pilot hole to mark the position before checking that there is suitable space behind the ceiling for the fixing assembly.



The minimum height required behind the ceiling is 50mm and the space must allow for an 80mm wide, 50mm deep noggin to be used to support the assembly.

3. Drill a hole (minimum $\text{Ø}28\text{mm}$, maximum $\text{Ø}40\text{mm}$) through the ceiling and the noggin.
4. Remove the fixing bracket carefully from the fixed head arm.

Easy Fit (450mm) Ceiling Mounted

5. Set the fixing bracket into position and mark the fixing points. Remove the bracket and drill and prepare suitable fixings. Refit the fixing bracket and secure it through the ceiling and into the noggin using the screws provided (if suitable).



6. Feed the arm through the fixing bracket to the correct depth. Tighten the nut using a 32mm spanner if necessary to facilitate.



7. Cut off the excess pipe allowing for a suitable working length to allow for the required 22mm connection. If a push fit connector is to be used then the pipe must be abraded to remove all chrome plating.
8. Connect the pipe work from the shower valve to the end of the fixed head pipe using a suitable coupling. Fully tighten the nut on the ceiling mounting bracket using a 32mm spanner if necessary to facilitate.



Run the shower for a few seconds to clear any debris and to check for any leaks.

9. Lubricate the 'O' ring if necessary and carefully slide the cover plate back over the fixed head arm and into position against the ceiling.
10. Secure the cover plate to the arm using the grub screw and 2.5mm hexagonal key provided.

Caring for your Product



DO NOT USE ABRASIVE CLEANERS. It is imperative that descaling is carried out in accordance with the manufacturer's Instructions, substances that are not suitable for plastics and electroplated surfaces must not be used.



Cleaning tip: to keep your shower effortlessly clean, we recommend drying all shower components with a soft cloth after use. Your product can be cleaned using only a soft cloth and washing up liquid.

200mm Ceiling Mounted

Components



Drencher head supplied /
purchased separately



Assembled model shown
for illustrative purposes

1. Run a 15mm outlet pipe from the shower valve to the preferred position for the fixed head arm. The pipe must terminate with a suitable 1/2" BSP fitting (not supplied).

All pipework and connectors must be secured using suitable fixings.



Note: the cover plate must be fitted to the arm prior to connecting.



The arm has a threaded connection each end.
The long-threaded end attaches to your 1/2" BSP fitting.
The short-threaded end is for the drencher head.

2. Slide the cover plate (face down) over the long-threaded end of the arm.

200mm Ceiling Mounted

3. Apply sealing tape or similar to the long exposed 1/2" BSP male thread of the arm to achieve a watertight seal, and secure into place ensuring the arm is correctly aligned.



Run the shower for a few seconds to clear any debris and to check for leaks.

4. Adjust the cover plate into position against the ceiling.

Scan for warranty registration



affix label here



www.elisabathrooms.com

The Flyers Way, Westerham, Kent TN16 1DE, UK

Register your guarantee instantly at
www.elisabathrooms.com/guarantee

Speak to our Customer Service team on
01959 560003



The company reserves the right to alter, change or modify the product specifications without prior warning.

Q5663 Part No 706507 Issue 01 - Jan 22