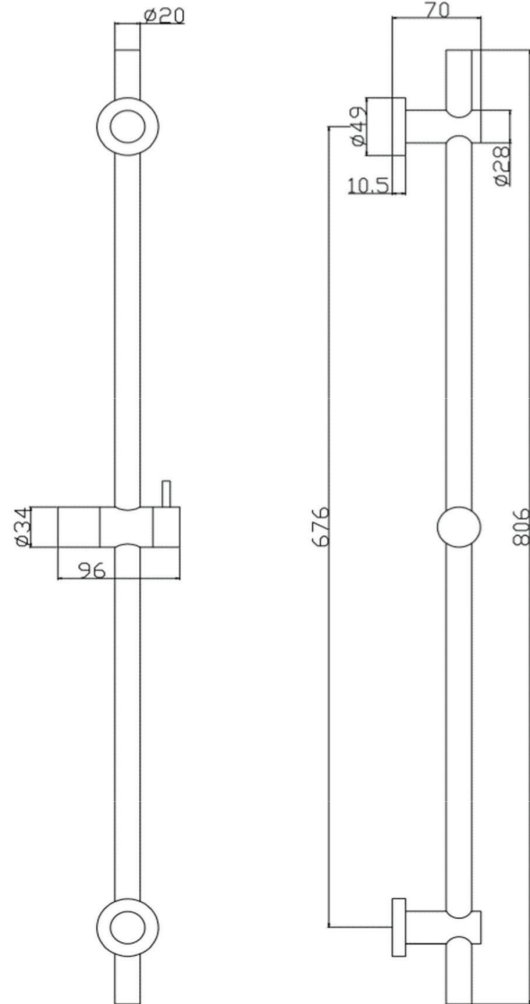
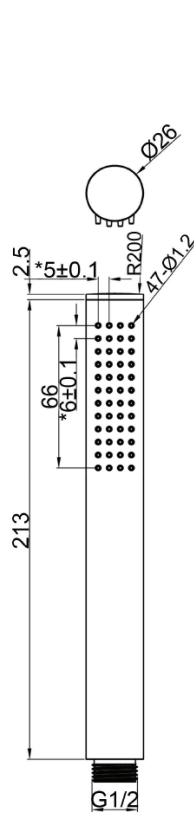


Bewl Deluxe Round Slider Rail Kit (Brushed Brass)



- Product Code:** 167.RRKDBB
- Construction:** Brass, stainless steel
- Finishes:** Brushed Brass
- Water Pressure:** Min. 1.0 bar, Max. 6.0 bar
- Plumbing Systems:** Suitable for all plumbing systems, Hot and Cold water pressure preferably balanced. Max. supply pressure differential requirement no greater than 5:1

Packaging: 85.5 x 31 x 39.5cm/carton (10 boxes), Dimension: 83.5 x 14 x 7.5cm/box; Weight: 1.65Kg / box

Guarantee: 1 year against manufacturing faults (Excluding serviceable parts)

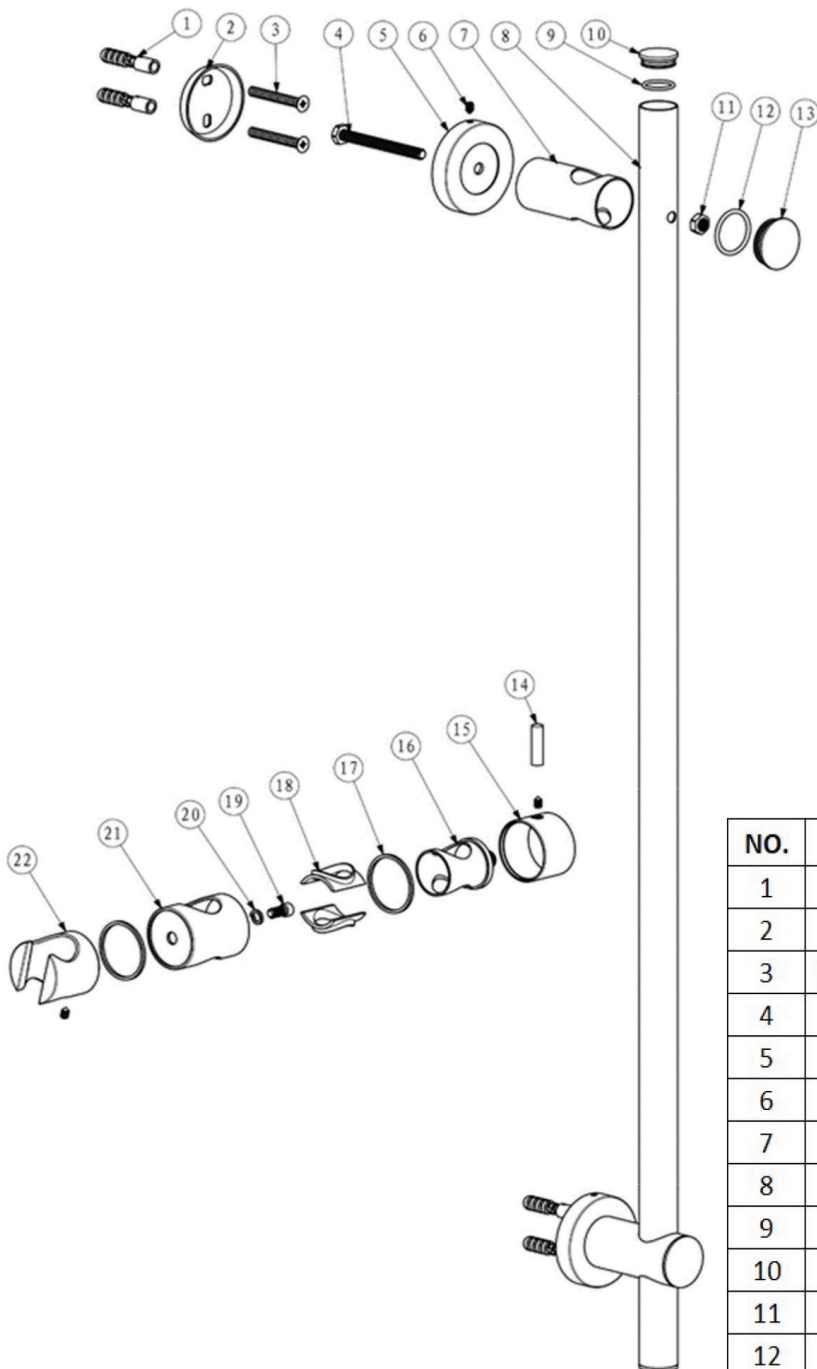
Additional Information: i) Extended 800mm slide rail
ii) Brass shower handset
iii) 1.5m PVC shower hose
iv) Adjustable brass handset holder

Flow Rates (litres per minute)

System Pressure	0.1 Bar	0.2 Bar	0.3 Bar	0.5 Bar	1.0 Bar	1.5 Bar	2.0 Bar	3.0 Bar	4.0 Bar	5.0 Bar
167.RRKDBB	-	-	-	-	5.0	-	7.0	8.5	-	11.0

All dimensions are in millimetres unless otherwise stated. The information contained on this page was correct at date of issue. Fitting dimensions are provided as a guide only. Some variation may occur due to manufacturing tolerances. We pursue a policy of continuing improvement in design and performance of our products and so reserve the right to change specifications without prior notice.

THE TUNBRIDGE WELLS
Brassware Co.



167.RRKDBB

NO.	DESCRIPTION	QTY
1	ABS WALL PLUG	4
2	S/STEEL WALL BRACKET BASE	2
3	M4x30 S/STEEL SELF-TAPPING SCREW	4
4	M4x30 S/STEEL SCREW	2
5	BRASS BASE PLATE	2
6	M4x5 S/STEEL GRUB SCREW	4
7	BRASS TUBE CONNECTOR	2
8	Ø20 S/STEEL RAIL	1
9	Ø17*1.5 NBR O-RING	2
10	BRASS RAIL END COVER CAP	2
11	M6 S/STEEL NUT	2
12	Ø25*2 NBR O-RING	2
13	BRASS DECORATIVE COVER	2
14	BRASS HANDLE ROD	1
15	BRASS HANDLE BODY	1
16	ABS HANDSET HOLDER INSERT	1
17	Ø32*Ø29*1.5 POM WASHER	2
18	ABS GREY WASHER	2
19	M6x10 S/STEEL GRUB SCREW	1
20	S/STEEL CIRCLIP	1
21	BRASS HANDSET HOLDER BODY	1
22	ABS HANDSET HOLDER BRACKET	1