

DATA SHEET

THE TUNBRIDGE WELLS
Brassware Co.

Pembury Deck Mounted Bath Shower Mixer Inc. Shower Kit (Excl. Waste)



Product Code: Chrome 167.PBDMBSM
Matt Black 167.PBDMBSMBL

Construction: Brass Body (CuZn40Pb2),
EN CW617N
(equivalent to BS CZ122)
Zinc-alloy handle

Water Pressure: Min. 1.0 bar, Max. 6.0 bar

Plumbing Systems: Suitable for all plumbing systems,
Hot and Cold water pressure
preferably balanced Max.
supply pressure differential
requirement no greater than 5:1

Standards: Complies with BS5412, BS EN200

Cartridge: ¼ turn 3/4" ceramic disc valves

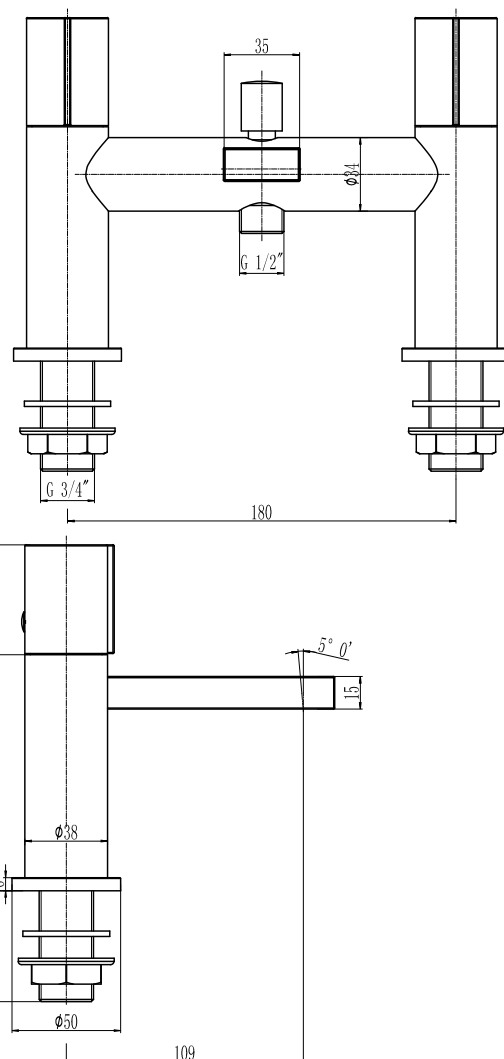
Aerator: Spout aerator

Fitting: Brass G¾" BSP tails

Flow Rates (litres per minute)

System Pressure	0.1 Bar	0.2 Bar	0.3 Bar	0.5 Bar	1.0 Bar	1.5 Bar	2.0 Bar	3.0 Bar	4.0 Bar	5.0 Bar
167.PBDMBSM/BL	-	6.0	-	8.5	11.9	14.7	16.9	20.4	-	-

All dimensions are in millimetres unless otherwise stated. The information contained on this page was correct at date of issue. Fitting dimensions are provided as a guide only. Some variation may occur due to manufacturing tolerances. We pursue a policy of continuing improvement in design and performance of our products and so reserve the right to change specifications without prior notice.



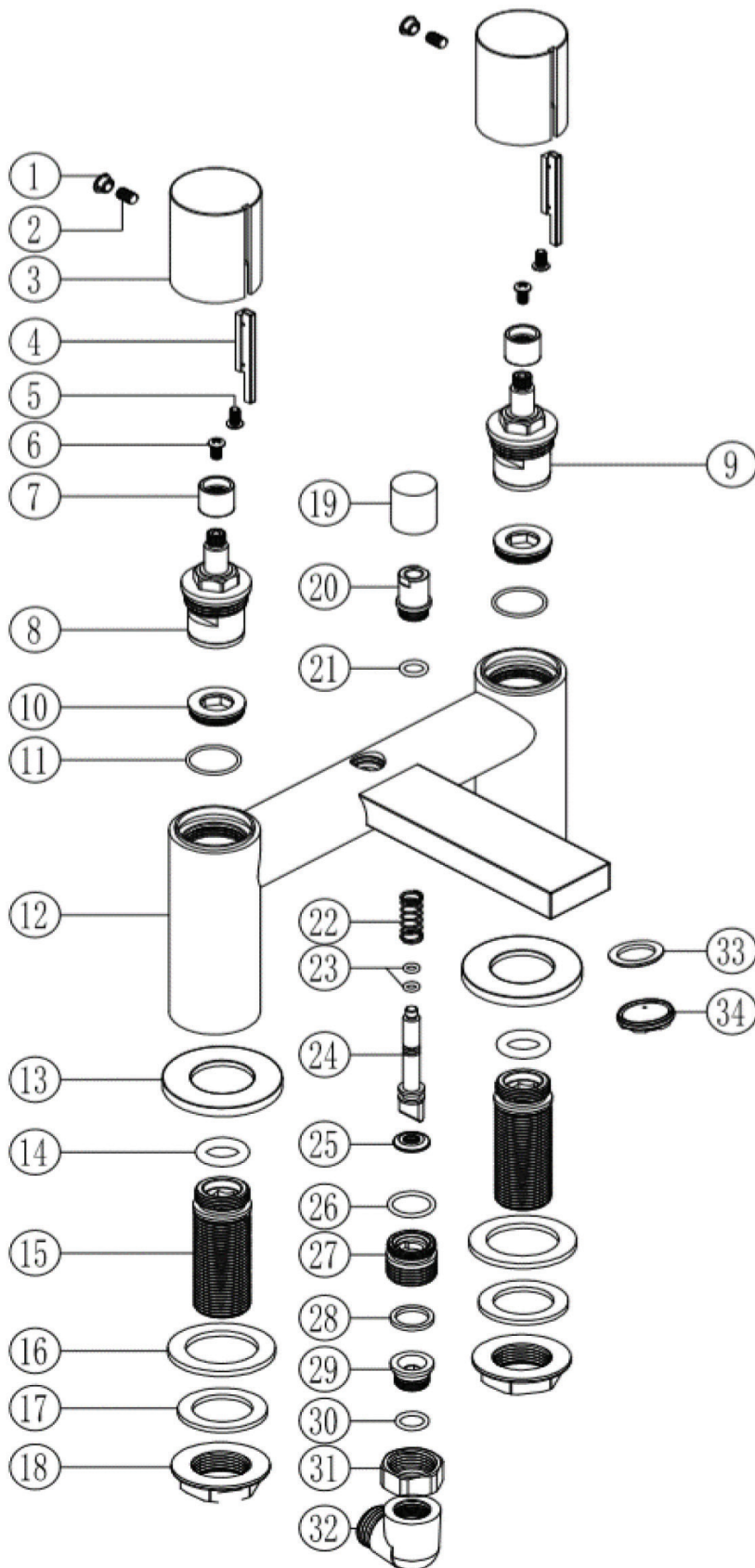
Packaging: 41.5 x 25.5 x 33.5cm / carton
(4 boxes)
Dimension: 24 x 20 x 16cm / box
Weight: 2.13Kg / box

Guarantee: 10 Years against manufacturing
faults. Excluding serviceable parts

Additional Information: Supplied with shower handset
and holder, 1.5m ABS shower hose,
double interlock stainless steel in
chrome or smooth PVC in matt black

167.PBDMBSM/BL

THE TUNBRIDGE WELLS
Brassware Co.



NO.	DESCRIPTION	QTY
1	COVER CAP	2
2	GRUB SCREW	4
3	HANDLE	2
4	DECORATIVE STRIP	2
5	GRUB SCREW	2
6	SCREW	2
7	PLASTIC INSERT	2
8	HOT CARTRIDGE	1
9	COLD CARTRIDGE	1
10	CARTRIDGE SEAT	2
11	O-RING	2
12	WELDED BODY	1
13	BASE PLATE	2
14	O-RING	2
15	BSP TAIL	2
16	RUBBER WASHER	4
17	RUBBER WASHER	2
18	PLASTIC LOCK NUT	2
19	DIVERTER CAP	1
20	DIVERTER CONNECTOR	1
21	O-RING	1
22	SPRING	1
23	O-RING	2
24	DIVERTER ROD	1
25	DIVERTER WASHER	1
26	O-RING	1
27	CONNECTOR	1
28	RUBBER WASHER	1
29	INNER CONNECTOR	1
30	O-RING	1
31	G1/2 NUT	1
32	ELBOW	1
33	SPOUT WASHER	1
34	AERATOR	1