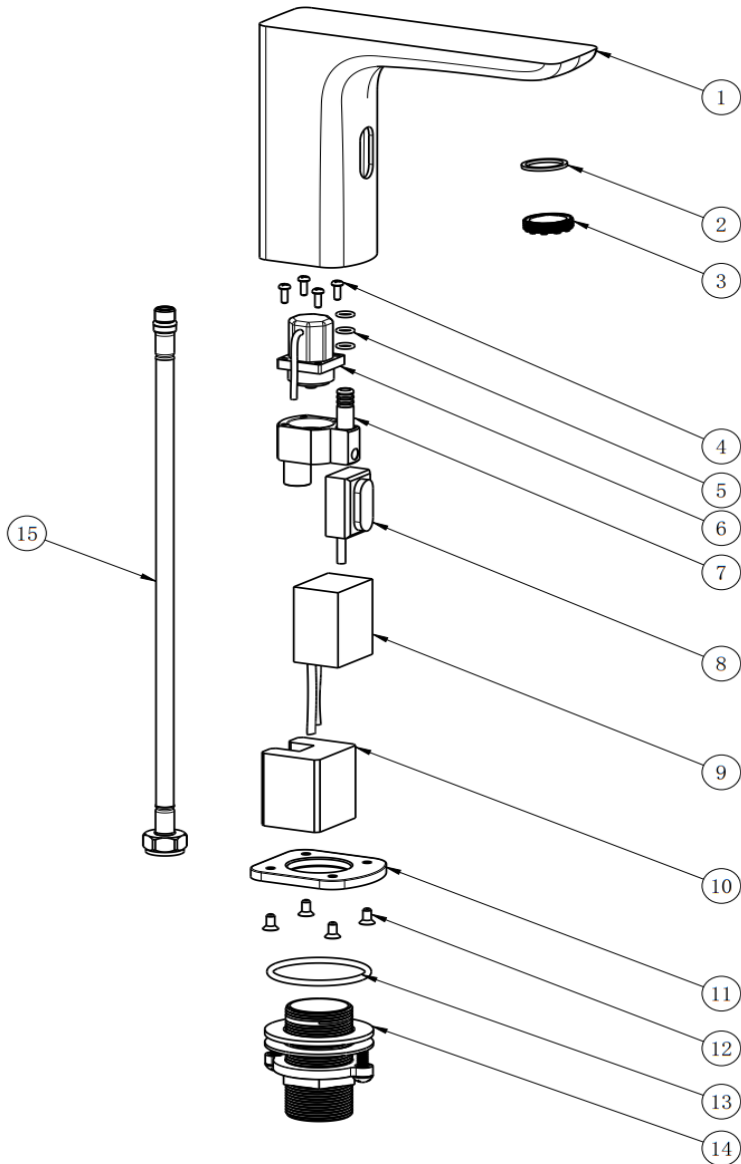
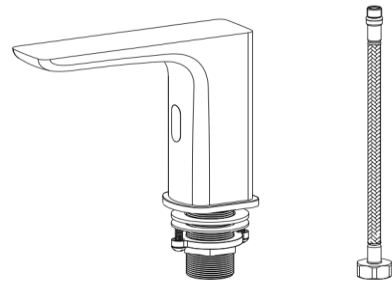


167.IREST



NO.	DESCRIPTION	QTY
1	BRASS TAP BODY	1
2	∅22*∅18*2 NBR WASHER	1
3	POM AERATOR	1
4	3x8 SS304 S/STEEL SCREW	4
5	∅9*∅1.5 NBR O-RING	3
6	POM BATTERY OPERATED VALVE	1
7	BRASS WELDED VALVE BASE	1
8	PMMA SENSOR WINDOW	1
9	ABS SENSOR	1
10	EPE FOAM	1
11	BRASS BASS PLATE	1
12	SS304 S/STEEL SCREW	4
13	∅50*∅3 NBR O-RING	1
14	SS304 S/STEEL BSP TAIL SET	1
15	G1/2xM10x1xDN8x60 CW617N BRASS FLEXITAL	1



Trouble shooting

Occasion		Solutions
Flush water none-stop or dripping	① There are sundries in the valve body ② Pores blockage in the body circuit	Close the inlet angle valve, then open the valve deck, clean the sundries in the calve body to keep the pores unobstructed
Not flush water	① Power shut-off ② Sensor wire breakdown ③ No signal	① Check the power ② Change the old sensor wire ③ Check the interconnecting link off or not