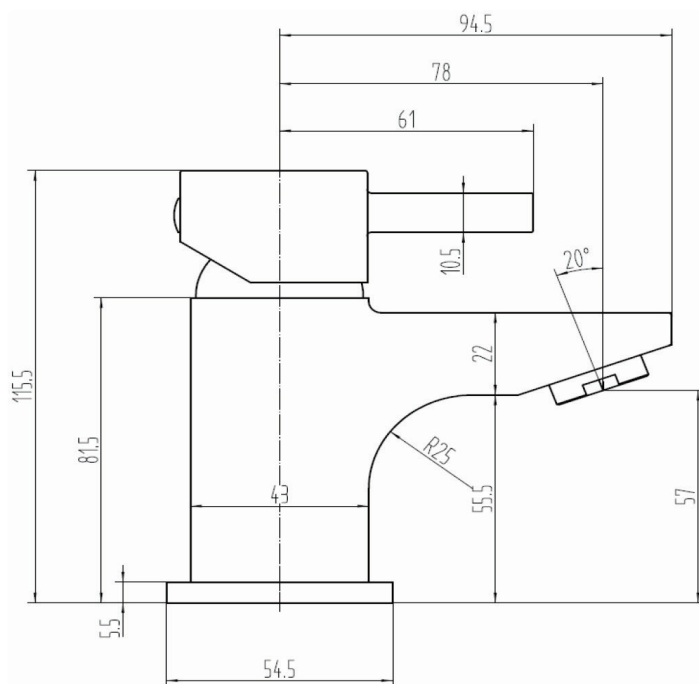


DATA SHEET

THE TUNBRIDGE WELLS
Brassware Co.

Frant Mini Mono Basin Mixer (Chrome)



Product Code: 167.FRMBM

Construction: Brass Body (HPb59-1), equivalent to BS CZ122 / EN CW617N / CuZn40Pb2; Zinc-alloy Handle & Base plate

Finishes: Chrome plated to BS EN 248

Water Pressure: Min. 0.1 bar, Max. 6.0 bar

Plumbing Systems: Suitable for all plumbing systems, Hot and Cold water pressure preferably balanced. Max. supply pressure differential requirement no greater than 5:1

Standards: Complies with BS6920, BS EN200

Cartridge: 35mm Ceramic disc cartridge

Net Weight: 666g (Tap only)

Fitting: UK: M10 x 400mm G $\frac{1}{2}$ " BSP Female Flexi Tails (4.5mm bore)

Aerator: Spout aerator

Packaging: 27 x 24.5 x 37.5cm / carton (10 boxes), Dimension: 23.5 x 13 x 7cm / box; Weight: 1.30Kg / box

Guarantee: 10 years against manufacturing faults (Excluding serviceable parts)

Additional Information: Supplied with G $\frac{1}{4}$ " sprung waste (UK only)

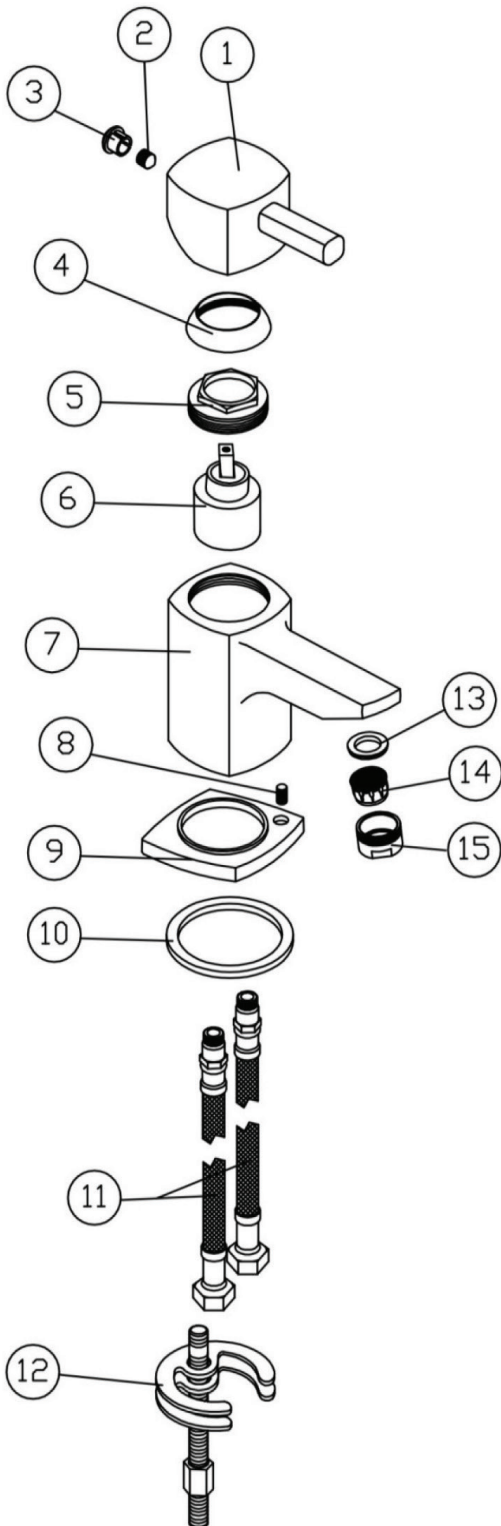
Flow Rates (litres per minute)

System Pressure	0.1 Bar	0.2 Bar	0.3 Bar	0.5 Bar	1.0 Bar	1.5 Bar	2.0 Bar	3.0 Bar	4.0 Bar	5.0 Bar
167.FRMBM	3.6	6.1	-	7.6	10.8	-	13.4	15.6	-	-

All dimensions are in millimetres unless otherwise stated. The information contained on this page was correct at date of issue. Fitting dimensions are provided as a guide only. Some variation may occur due to manufacturing tolerances. We pursue a policy of continuing improvement in design and performance of our products and so reserve the right to change specifications without prior notice.

167.FRMBM

THE TUNBRIDGE WELLS
Brassware Co.



NO.	ITEM CODE	DESCRIPTION	QTY
1	T8102M-02	HANDLE	1
2		M5*6 SCREW	1
3	T8805-30	INDICE	1
4	T8702-16	PALSTIC COVER	1
5	T8602-09	CARTRIDGE COVER	1
6	T7012-08	35MM CARTRIDGE	1
7	T8102M-01	BODY	1
8		M4*8 SCREW	1
9	T8102M-05	BASE PLATE	1
10		46*38*2.5 WASHER	1
11	T7402-22	M10*1*35 FLEXI TAILS	2
12	T9002M-25	M8 FIXING KIT	1
13		23*15*3 WASHER	1
14	T8202-11	NEOPERL AERATOR	1
15	T8805-10	M24*1 NOZZLE	1