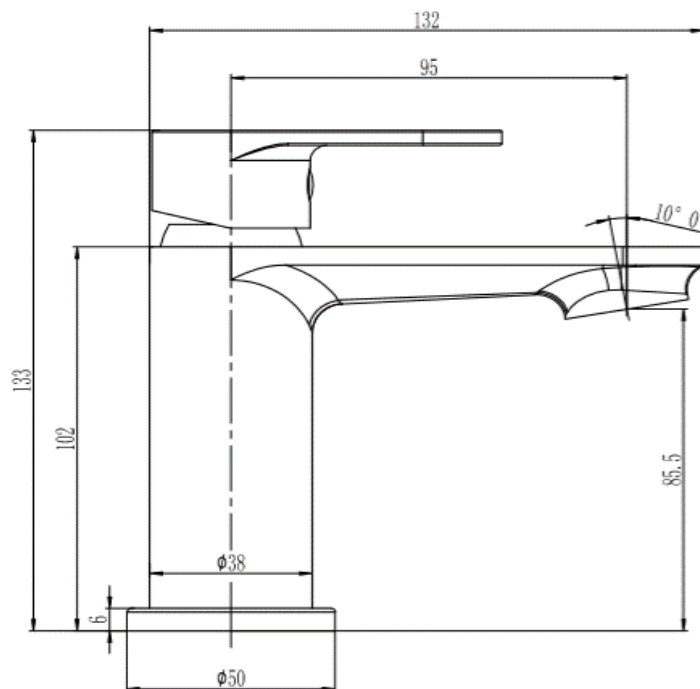


Eridge Mini Basin Mixer (Inc. Sprung Waste)



Product Code: Chrome 167.ERMBM
Construction: Brass Body (CuZn40Pb2),
EN CW617N (equivalent to BS CZ122)
Zinc-alloy handle

Water Pressure: Min. 0.2 bar, Max. 6.0 bar

Plumbing Systems: Suitable for all plumbing systems, Hot and Cold water pressure preferably balanced
Max. supply pressure differential requirement no greater than 5:1

Standards: Complies with BS6920, BS EN200

Cartridge: 35mm ceramic disc cartridge

Aerator: M24*1 Spout aerator

Fitting: UK: M10 x 350mm G½" BSP female flexi tails

Packaging: 27 x 24.5 x 37.5cm / carton (10 boxes)
Dimension: 23.5 x 13 x 7cm / box
Weight: 1.10Kg / box

Guarantee: 10 years against manufacturing faults
(excluding serviceable parts)

Additional Information: Supplied with G1¼" Sprung Waste

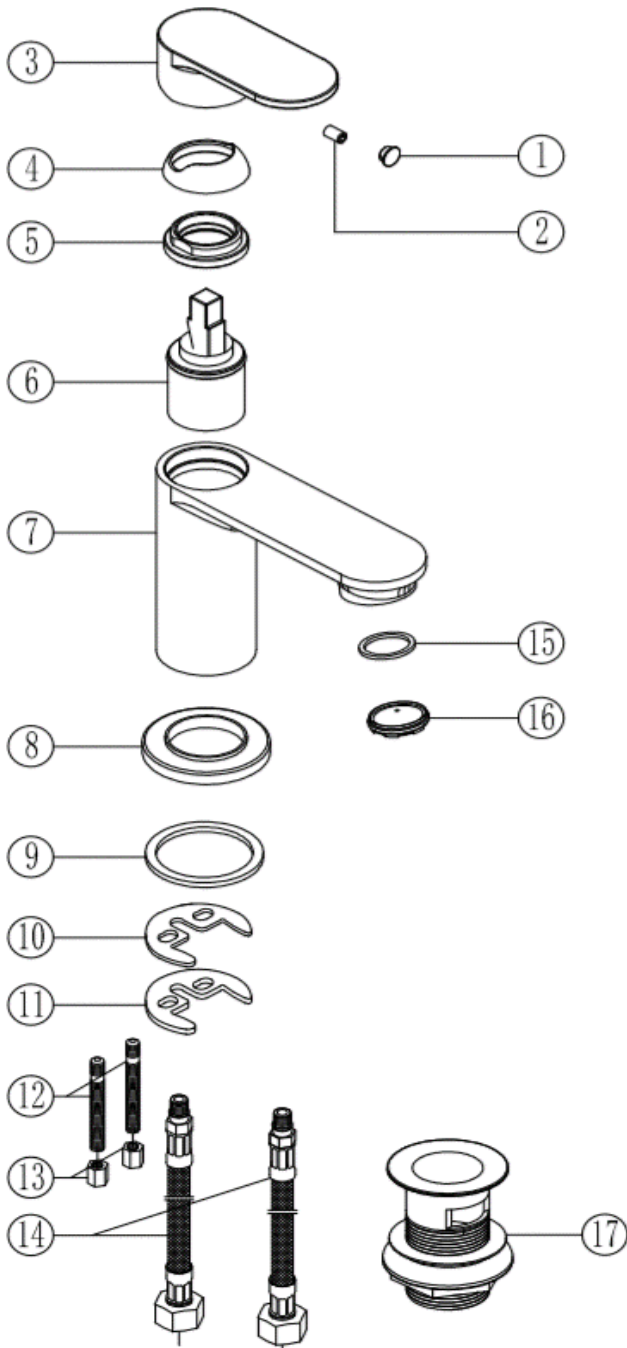
Flow Rates (Litres per minute)

System Pressure	0.1 Bar	0.2 Bar	0.3 Bar	0.5 Bar	1.0 Bar	1.5 Bar	2.0 Bar	3.0 Bar	4.0 Bar	5.0 Bar
167.ERMBM	-	4.4	-	6.2	8.8	10.6	12.5	15.1	-	-

All dimensions are in millimetres unless otherwise stated. The information contained on this page was correct at date of issue. Fitting dimensions are provided as a guide only. Some variation may occur due to manufacturing tolerances. We pursue a policy of continuing improvement in design and performance of our products and so reserve the right to change specifications without prior notice.

167.ERMBM

THE TUNBRIDGE WELLS
Brassware Co.



NO.	ITEM	QTY
1	ABS COVER CAP	1
2	S/S HANDLE GRUB SCREW	1
3	ZINC-ALLOY HANDLE	1
4	HANDLE COLLAR	1
5	CARTRIDGE NUT	1
6	35MM CERAMIC CARTRIDGE	1
7	TAP BODY	1
8	BASE PLATE	1
9	NBR WASHER	1
10	HORSE-SHOE RUBBER WASHER	1
11	HORSE-SHOE STEEL PLATE	1
12	FIXING ROD	2
13	FIXING NUT	2
14	FLEXI-TAILS	2
15	AERATOR WASHER	1
16	24*1 AERATOR	1
17	G1-1/4" SPRUNG WASTE	1