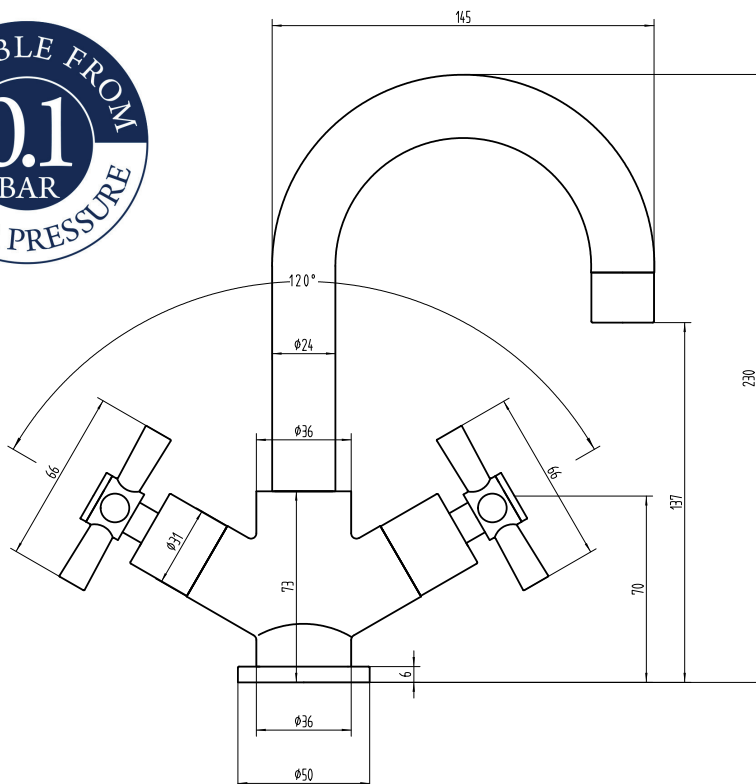


Dunorlan Mono Basin Mixer (Inc. Waste)



Product Code: Chrome 167.DRBM

Construction: Brass Body (CuZn40Pb2), EN CW617N (equivalent to BS CZ122) Zinc-alloy handle

Finishes: Chrome plated to BS EN 248

Water Pressure: Min. 0.1 bar, Max. 6.0 bar

Plumbing Systems: Suitable for all plumbing systems, Hot and Cold water pressure preferably balanced Max. supply pressure differential requirement no greater than 5:1

Standards: Complies with BS6920, BS EN200

Cartridge: 1/4 turn 3/4" ceramic disc valves

Aerator: Spout aerator

Fitting: UK: M10 x 350mm G1/2" BSP female flexi tails

Packaging: 47.5 x 26.5 x 36cm / carton (10 boxes)
Dimension: 25.5 x 23 x 7cm / box
Weight: 1.60Kg / box

Guarantee: 10 years against manufacturers faults (Excluding serviceable parts)

Additional Information: Supplied with G1 1/4" Slotted Click Clack Waste

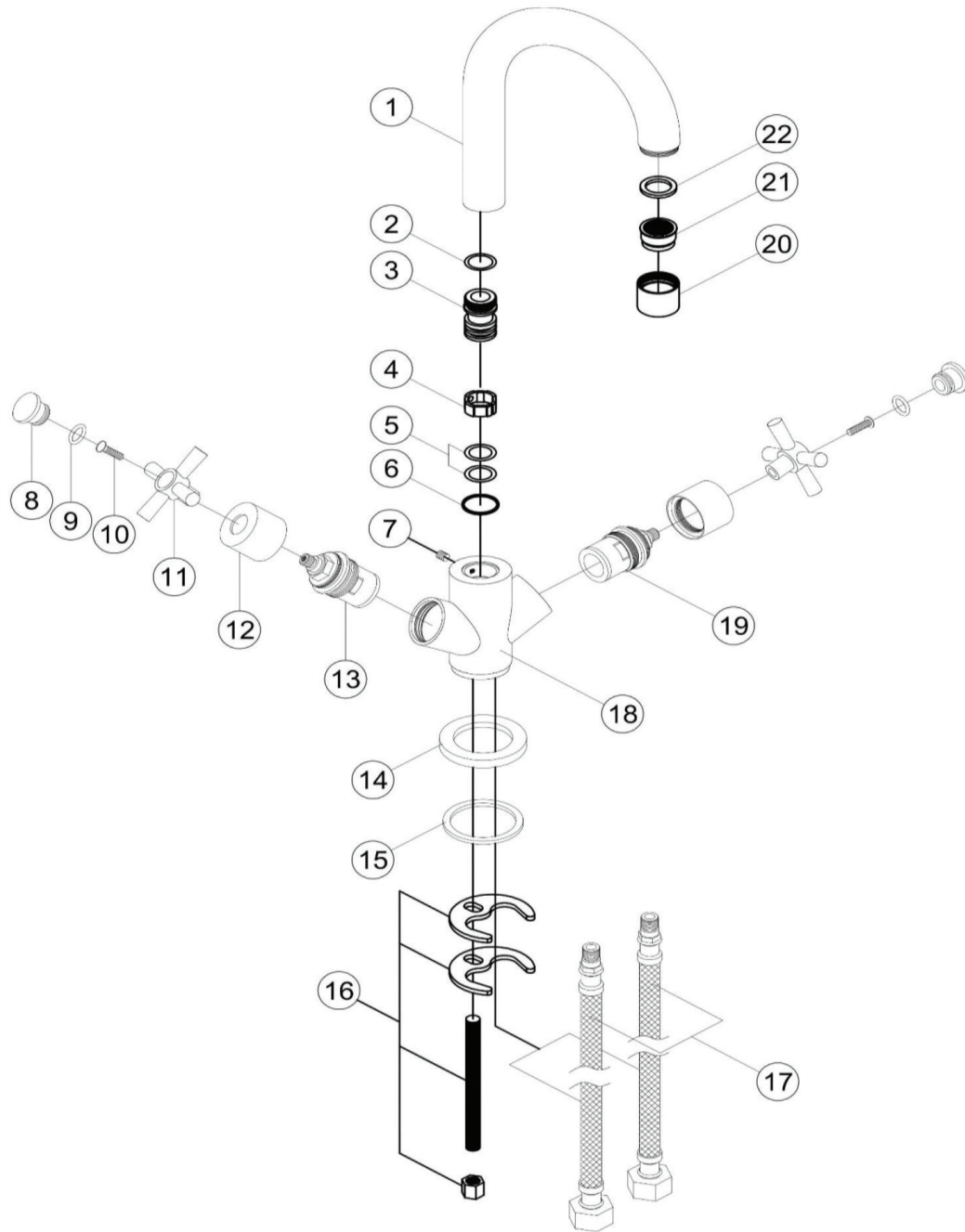
Flow Rates (litres per minute)

System Pressure	0.1 Bar	0.2 Bar	0.3 Bar	0.5 Bar	1.0 Bar	1.5 Bar	2.0 Bar	3.0 Bar	4.0 Bar	5.0 Bar
167.DRBM	3.0	4.1	-	5.0	7.0	9.0	13.1	15.0	-	-

All dimensions are in millimetres unless otherwise stated. The information contained on this page was correct at date of issue. Fitting dimensions are provided as a guide only. Some variation may occur due to manufacturing tolerances. We pursue a policy of continuing improvement in design and performance of our products and so reserve the right to change specifications without prior notice.

167.DRBM

THE TUNBRIDGE WELLS
Brassware Co.



11	HANDLE	2	22	WASHER	1
10	SCREW	2	21	AERATOR	1
9	O-RING	2	20	NOZZLE	1
8	HANDLE CAP	2	19	COLD CARTRIDGE	1
7	GRUB	1	18	BODY	1
6	WASHER	1	17	FLEXI TAILS	1
5	O-RING	2	16	FITTING KITS	1
4	SWIVEL COLLAR	1	15	WASHER	1
3	CONNECTOR	1	14	BASE PLATE	1
2	O-RING	1	13	HOT CARTRIDGE	1
1	SPOUT	1	12	SHROUD	2
No.	DESCRIPTION	QTY	No.	DESCRIPTION	QTY