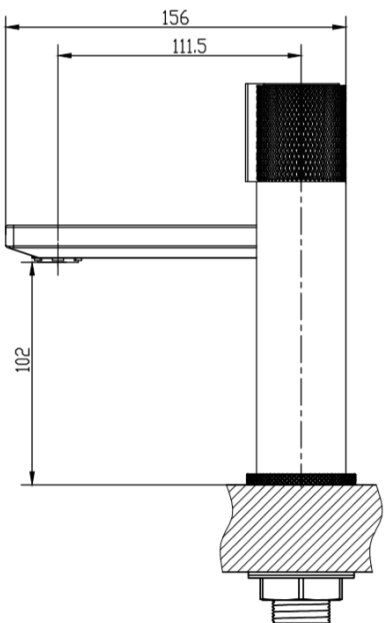
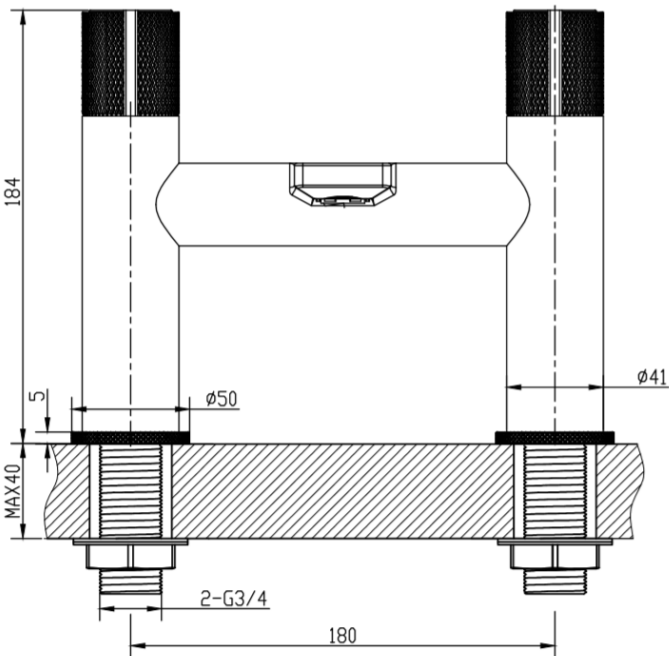


Calverley Deck Mounted Bath Filler (Excl. Waste)



- Product Code:** Chrome 167.CVDMBF
- Construction:** Brass Body (CuZn40Pb2), EN CW617N (equivalent to BS CZ122)
Zinc-alloy handles
- Finishes:** Chrome
(Ni: 8-12 µm, CR: 0.25-0.3 µm)
- Plumbing Systems:** Suitable for all plumbing systems
- Water Pressure:** Min. 0.5 bar, Max. 6.0 bar
- Standards:** Complies with BS5412, BS EN200
- Cartridge:** ¼ turn 3/4" ceramic disc valves
- Aerator:** Spout Aerator
- Fitting:** Brass G3/4" BSP tails
- Packaging:** 50 x 29.5 x 38cm / carton (4 boxes)
Dimension: 28 x 24 x 18cm / box
Weight: 2.70Kg / box
- Guarantee:** 10 years against manufacturing faults (Excluding serviceable parts)



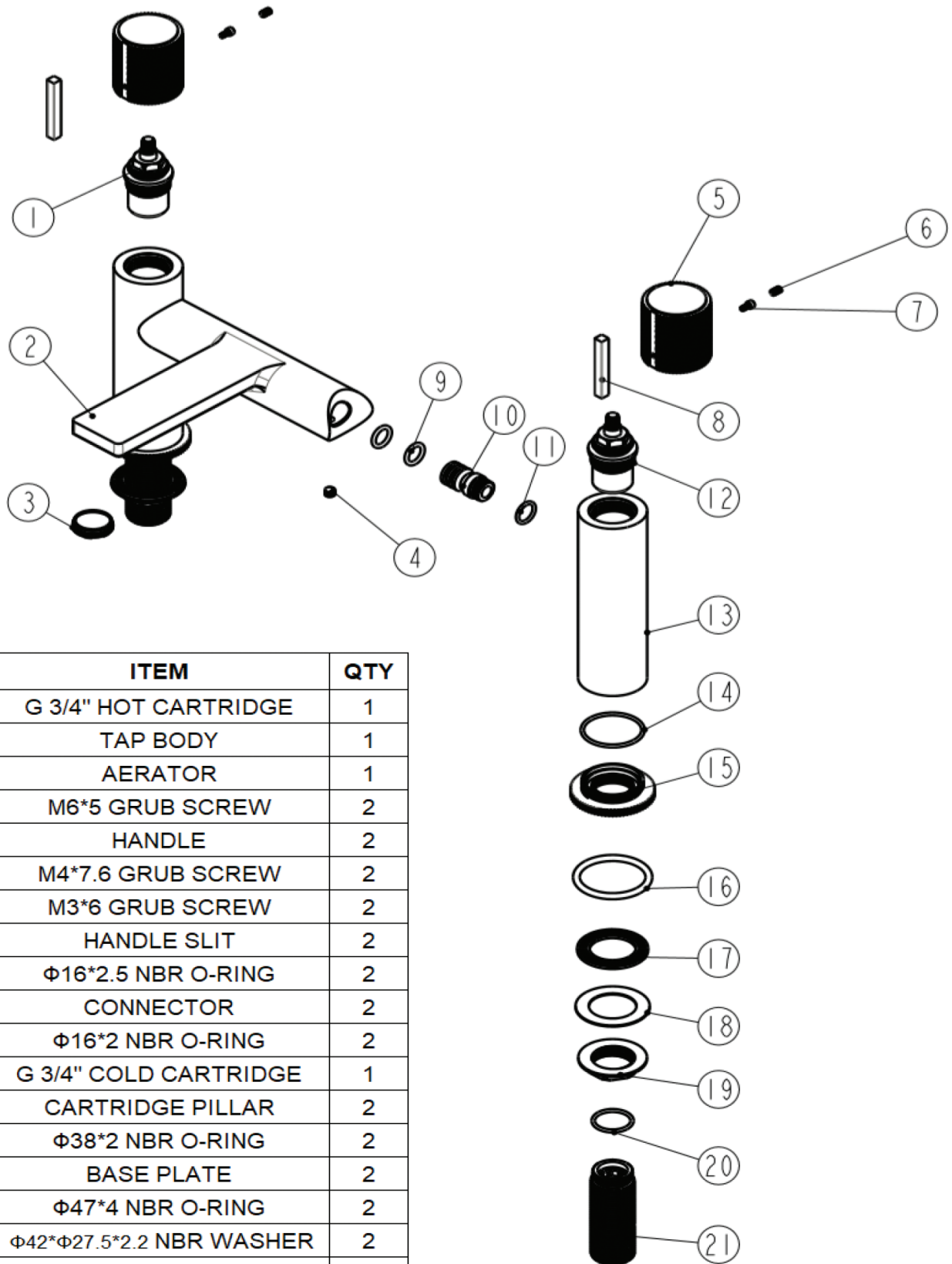
Flow Rates (litres per minute)

System Pressure	0.1 Bar	0.2 Bar	0.3 Bar	0.5 Bar	1.0 Bar	1.5 Bar	2.0 Bar	3.0 Bar	4.0 Bar	5.0 Bar
167.CVDMBF	7.5	10.0	12.0	15.4	21.6	26.4	30.5	37.4	43.3	–

All dimensions are in millimetres unless otherwise stated. The information contained on this page was correct at date of issue. Fitting dimensions are provided as a guide only. Some variation may occur due to manufacturing tolerances. We pursue a policy of continuing improvement in design and performance of our products and so reserve the right to change specifications without prior notice.

167.CVDMBF

THE TUNBRIDGE WELLS
Brassware Co.



NO.	ITEM	QTY
1	G 3/4" HOT CARTRIDGE	1
2	TAP BODY	1
3	AERATOR	1
4	M6*5 GRUB SCREW	2
5	HANDLE	2
6	M4*7.6 GRUB SCREW	2
7	M3*6 GRUB SCREW	2
8	HANDLE SLIT	2
9	Φ16*2.5 NBR O-RING	2
10	CONNECTOR	2
11	Φ16*2 NBR O-RING	2
12	G 3/4" COLD CARTRIDGE	1
13	CARTRIDGE PILLAR	2
14	Φ38*2 NBR O-RING	2
15	BASE PLATE	2
16	Φ47*4 NBR O-RING	2
17	Φ42*Φ27.5*2.2 NBR WASHER	2
18	Φ44*Φ28.3*1 SS WASHER	2
19	G 3/4" LOCK NUT	2
20	Φ25*2 NBR O-RING	2
21	G 3/4" BSP TAILS	2