

# DATA SHEET

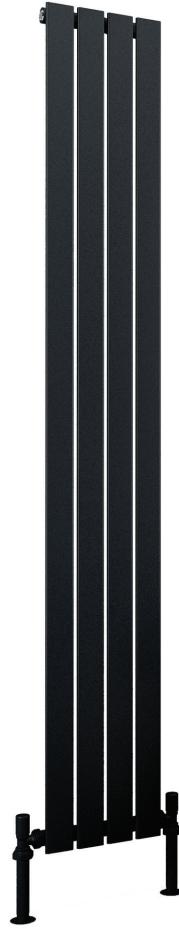


THE TUNBRIDGE WELLS  
Brassware Co.

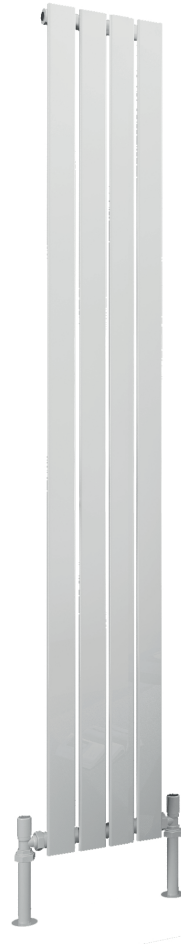
## Dunorlan - 1600 x 300mm (Chrome, Matt Black, Matt White and Brushed Brass)



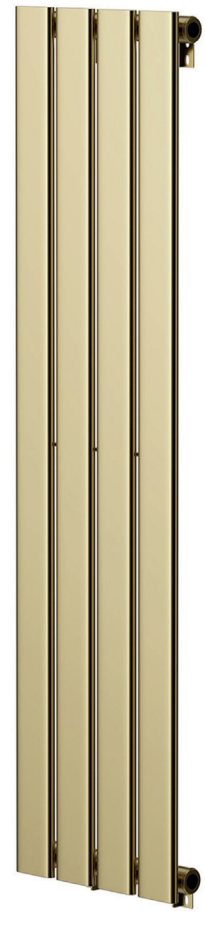
Chrome



Matt Black



Matt White



Brushed Brass

| Product Code               | Finish        | Coating       | BTU (at 50°) | BTU (at 60°) | Dual Fuel Recommended Element | Bars     | Pipe Centres (mm) | Projection (mm) |
|----------------------------|---------------|---------------|--------------|--------------|-------------------------------|----------|-------------------|-----------------|
| <b>1600(H) x 300(W) mm</b> |               |               |              |              |                               |          |                   |                 |
| <b>16.DN163CH</b>          | Chrome        | Electroplated | 1297         | 1647         | N/A                           | <b>4</b> | 390               | 90              |
| <b>16.DN163MB</b>          | Matt Black    | Powder Coated | 1853         | 2353         | N/A                           | <b>4</b> | 390               | 90              |
| <b>16.DN163MW</b>          | Matt White    | Powder Coated | 1853         | 2353         | N/A                           | <b>4</b> | 390               | 90              |
| <b>16.DN163BB</b>          | Brushed Brass | PVD           | 1297         | 1647         | N/A                           | <b>4</b> | 390               | 90              |

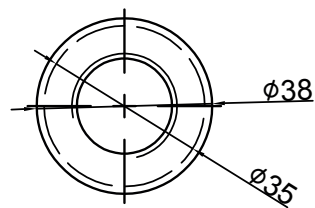
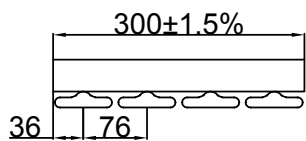
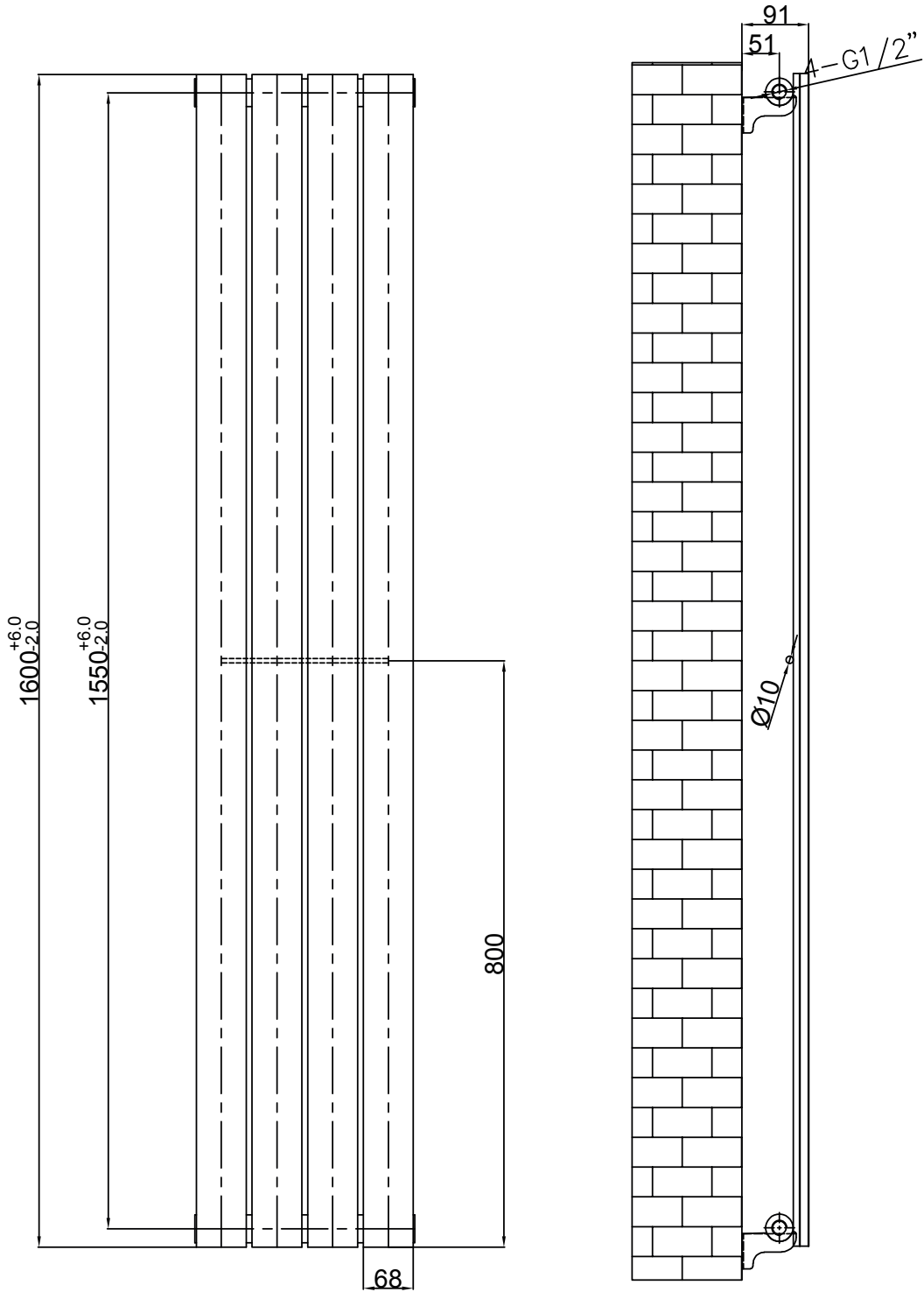
**Rating:** IPX4

**Note:** Not suitable with an element, valves sold separately

All dimensions are in millimetres unless otherwise stated. The information contained on this page was correct at date of issue. Fitting dimensions are provided as a guide only. Some variation may occur due to manufacturing tolerances. We pursue a policy of continuing improvement in design and performance of our products and so reserve the right to change specifications without prior notice.

# 16.DN163

THE TUNBRIDGE WELLS  
Brassware Co.



3:1