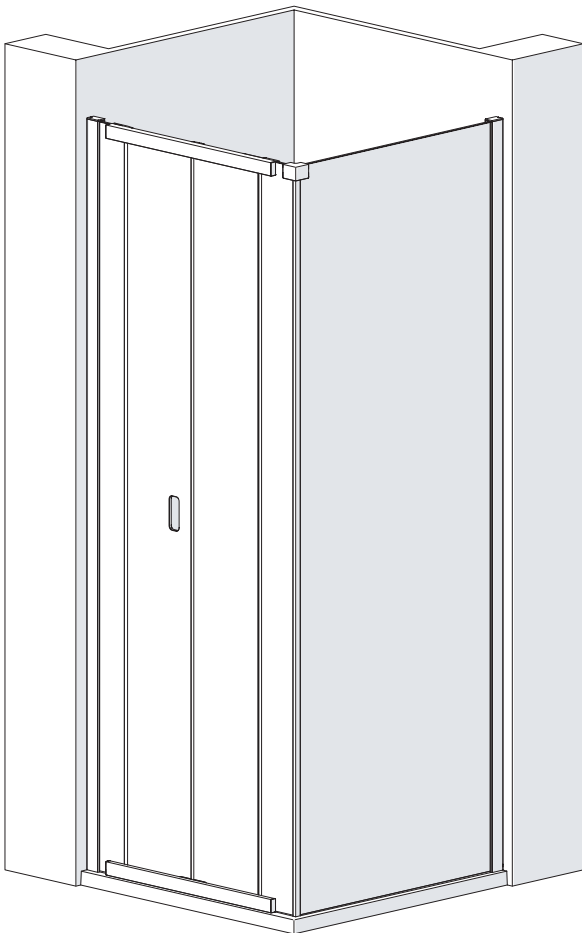


INSTALLATION INSTRUCTIONS - CENTREFOLD CORNER

Please read these instructions throughout before installing as incorrect fitting will invalidate the guarantee.
If you are unsure about these instructions please contact Kudos Shower Products 01539 564040.

HEALTH & SAFETY WARNING

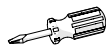
DUE TO THE WEIGHT & SIZE OF THE GLASS PANEL(S) A MINIMUM OF TWO PERSONS ARE REQUIRED TO MOVE AND INSTALL THIS ENCLOSURE



Tools Required



Pozi-head Screwdriver



Flat-head Screwdriver



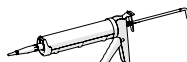
3mm Allen Key - supplied



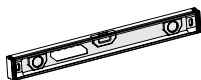
Cutting Pliers



7mm Masonry Drill Bit



Clear Silicone Sealant



Spirit Level



Drill (Battery or Mains)



Pencil



Tape Measure

Cleaning - General

For the wall post and fixings use only warm soapy water and damp cloth/ sponge on a regular basis. After cleaning please rinse with clean water to remove any residue.

Do not use abrasive scouring powders, chemicals or aerosol cleaners - these may result in damage to the surfaces, in particular, the plated component parts.

Kudos LifeShield Glass Treatment

The glass panels are pre-treated with Life Shield on the inside surfaces only. Whilst this makes cleaning the glass easier and helps prevent the build up of harmful lime-scale and soap deposits, the glass still needs to be maintained on a regular basis. We recommend the use of a detergent and aroma free glass cleaner (A 50/50 mix of white vinegar and water works well).

DO NOT use strong detergents, abrasive cleaners or abrasive scrubbing equipment for cleaning, these can damage the coating.

DO use a squeegee to remove remaining droplets of water from glass after showering, any build up of residue can be removed easily using an appropriate cleaner and agitation from soft cleaning equipment.

Important

Check appearance of all product - any defects must be reported to Kudos Shower Products before assembly/installation. Claims for imperfections will only be accepted prior to assembly/installation.

Any claims made under the terms of the Lifetime Guarantee must be reported to Kudos within 21 days of the fault occurring.

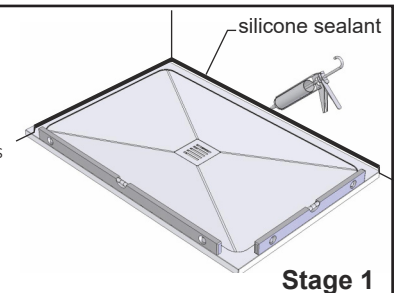
Check the enclosure adjustment sizes are suitable for your installation.

Use care when drilling into the walls to avoid hidden pipes or electric cables.

Shower Tray

Ensure the top of shower tray is LEVEL in ALL directions.

Once the tray is installed but before the wall tiles are fitted, any gap between the tray and the walls must be filled with silicone sealant flush with the top of the tray.



Stage 1

Once the walls have been tiled but before the enclosure is installed, the tiles must be silicone sealed to the tray all of the way around in one continuous bead.

Failure to follow these instructions will result in leakage problems.



Stage 2

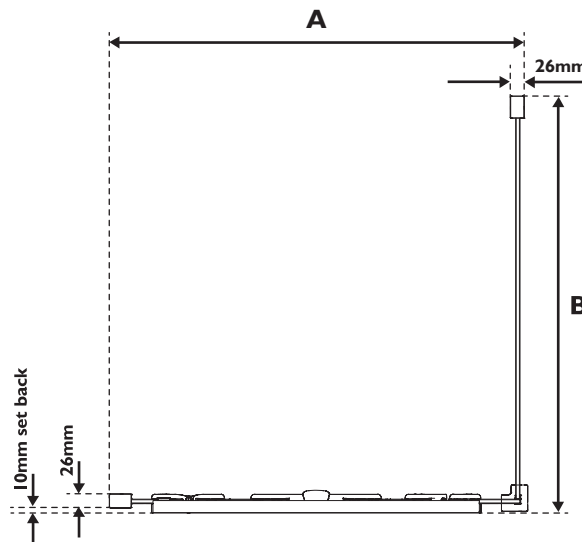
THESE INSTRUCTIONS ARE TO BE LEFT WITH THE CONSUMER

Product Sizes and Adjustments

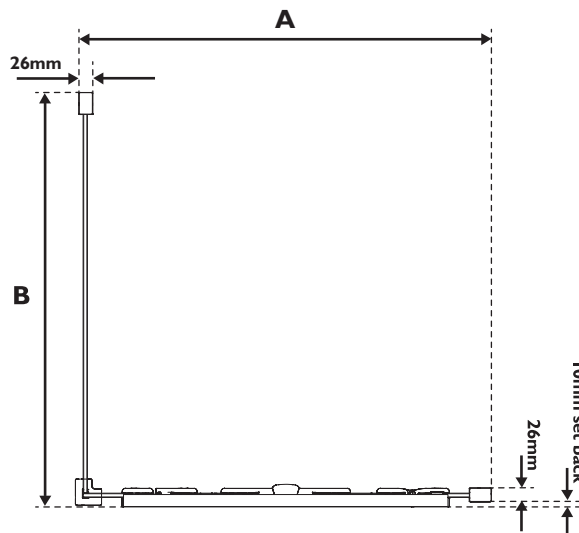
PRODUCT	PACK CODES		DIMENSIONS (mm)
CENTRE-FOLD	IN-LINE PANEL PACK	DOOR PACK	A
800	P8CF80PI	P8CF80P2	770 to 790
900	P8CF90PI	P8CF90P2	870 to 890
1000	P8CF100PI	P8CF100P2	970 to 990

PRODUCT	PACK CODES	DIMENSIONS (mm)
CENTRE-FOLD	SIDE PANEL PACK	B
800	P8CF2SP80	770 to 790
900	P8CF2SP90	870 to 890

**ENCLOSURE HEIGHT
= 2000mm**

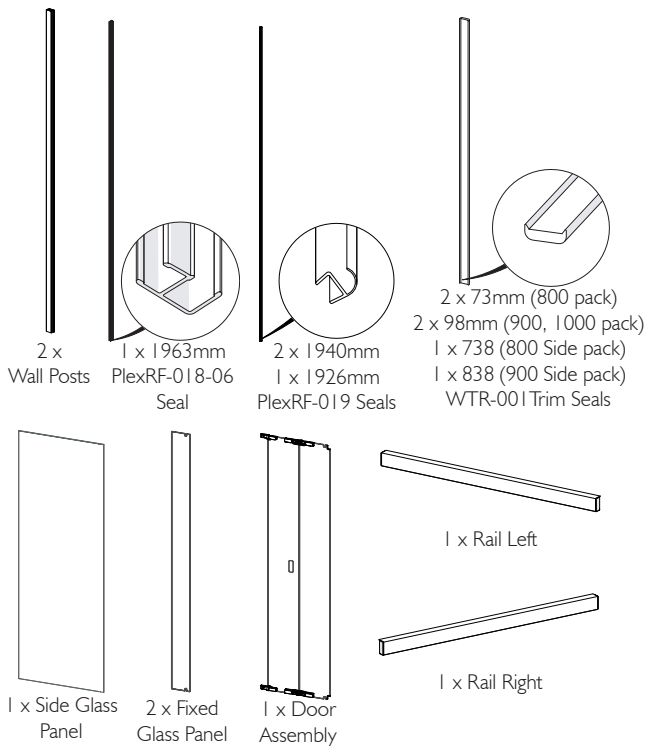


LEFT HAND INSTALLATION



RIGHT HAND INSTALLATION

Parts List



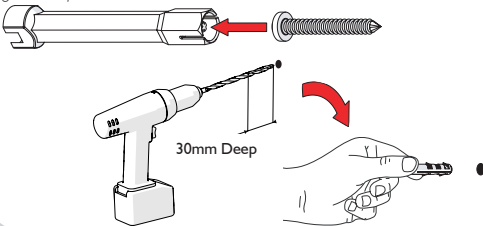
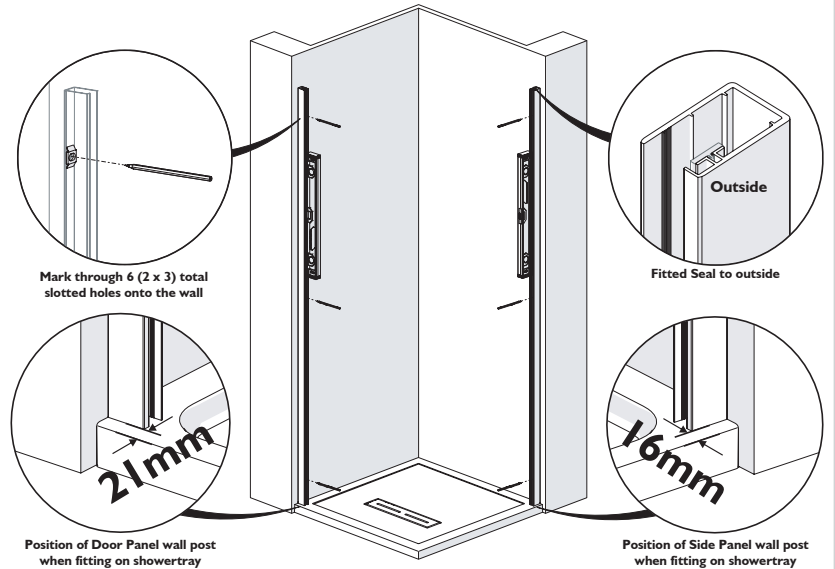
Installation Packs



Installation Steps

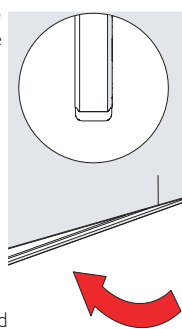
Step 1 - Install Wall Posts

1. Position door wall post 21mm in from front edge of the tray, as shown. Using spirit level to ensure wall post is vertical, mark through 3 slotted holes per wall post (6 total) onto wall surface. Remove the post from the tray, placing safely off to one-side.
2. Using a 7mm masonry drill bit and drill (or appropriate drill bit if drilling tiles), drill six holes using the 'spot' marks, each hole should be 30mm in depth.
3. Insert the six '7mm Wall Plugs' into the six holes. Fix wall post using 3x No.8 x 30mm long screws provided. Tighten all screws using pozi-head screwdriver, ensuring the wallpost is vertical.
4. Position side panel wall post 16mm in from front edge of the tray, as shown. Repeat the above steps.
Insert screw heads into the wizard tool supplied to help locate screws into wall plugs. Then tighten with pozi head screwdriver.



Step 2 - Add Trim to Side Panel

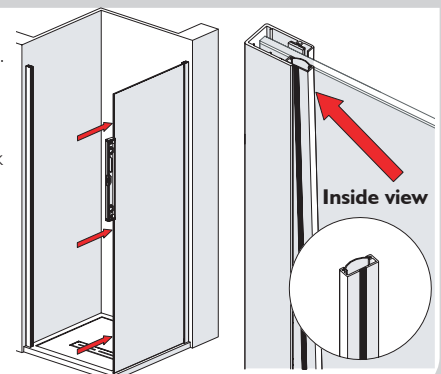
1. Take note of label on glass **This surface to outside** this will determine which is the bottom edge of your installation.
- 2a. For 800 Side Panel Unit acquire 1 X 736mm Trim Seal.
2b. For 900 Side Panel Unit acquire 1 X 836mm Trim Seal.
3. Peel off a small length of the bottom trim adhesive tape and apply to bottom of glass panel from the edge as shown. Continue along length of trim, peeling away the tape as you go, until the full trim length is adhered to the panel.



Step 3 - Fit Side Panel Glass

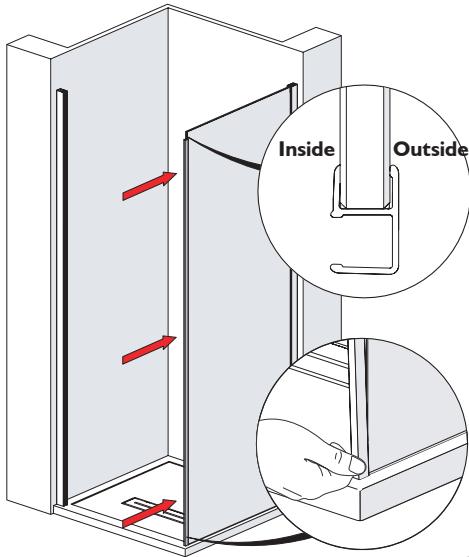
1. Carefully fit glass panel into slot in wall post, ensuring panel is parallel to tray edge.
2. Secure Panel using the Push-in channel. Remove the protective sleeve on the push-in channel extrusion. From inside the enclosure, place the push-in channel (black strip towards glass) against the glass. At this stage don't need to fully insert. Insert 1/4 at the top to secure glass panel whilst installing.

Push-in channel can be removed, if necessary, by inserting tool (M305-01) supplied to pull the channel out at top.



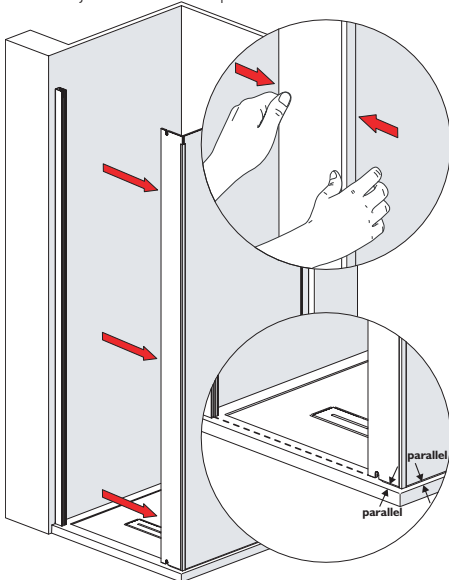
Step 4 - Fit Corner Joint Seal

1. Acquire the PlexRF-018-06 from the Side Panel Pack. From starting at the bottom, press this over the glass edge ensuring that it is fully seated over the entire length. Position as shown. If tight, lubricate corner seal and glass edges with a damp **clean** cloth to ease fitment - the water will evaporate over a short period. **Do not use** silicone spray or any other substance other than water; these will not fully dry out and will compromise the grip and rigidity of the joint.



Step 6 - Fit Fixed Panel

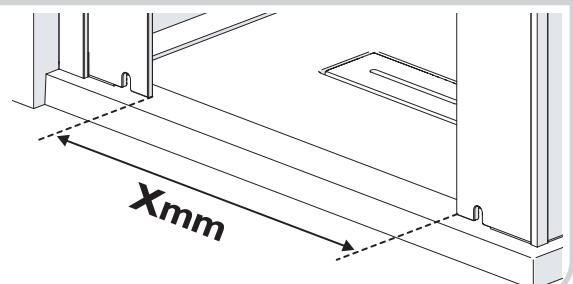
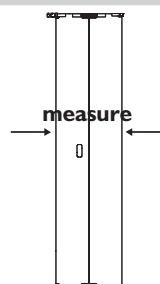
1. Add fixed panel to the Corner Joint seal, make sure it's the correct panel. Starting from the top use both hands push the fixed panel into the seal channel. Make sure the panel is fully inserted all the way through. Adjust side panel/in-line panel to ensure side panel is parallel to tray edge and the outside surface of in-line panel is aligned with the surface of gripper seal in the adjacent 'door' wallpost.



Step 9 - Adjust In-line Glass Panels

1. Carefully unpack the folding door assembly pack. Unfold the panels into a straight line and measure the overall width of the panels then add **11mm** to this to give '**X**' dimension. For example: folding panel width = 631mm + 11mm = 642mm

2. Adjust the fixed panel inserted into the wallpost to achieve the correct '**X**' dimension between both panels. Will need to remove and re-insert the push-in channel to achieve this. Use level to ensure fixed panel is vertical.



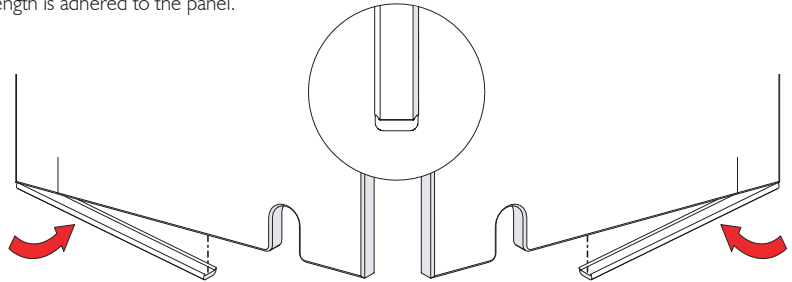
Step 5 - Add Trim to Both Fixed Panels

1. Take note of label on glass '**This surface to outside**' this will determine which is the bottom edge of your installation.

2a. For 800 Unit acquire 2 X 73mm Trim Seals.

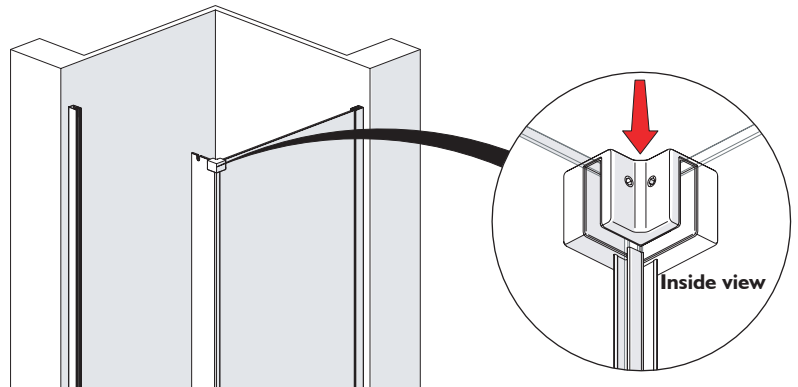
2b. For 900, 1000 Units acquire 2 X 98mm Trim Seals.

3. Peel off a small length of the bottom trim adhesive tape and apply to bottom of glass panel from the edge as shown. Continue along length of trim, peeling away the tape as you go, until the full trim length is adhered to the panel.



Step 7 - Add Corner Bracket

1. Acquire Corner Bracket (DCM41-01) from the Side Panel Pack. As indicated place this over the top of the two adjoining glass panels. Use the 3mm Allen key to remove/tighten the grub screws to the fixed panels.

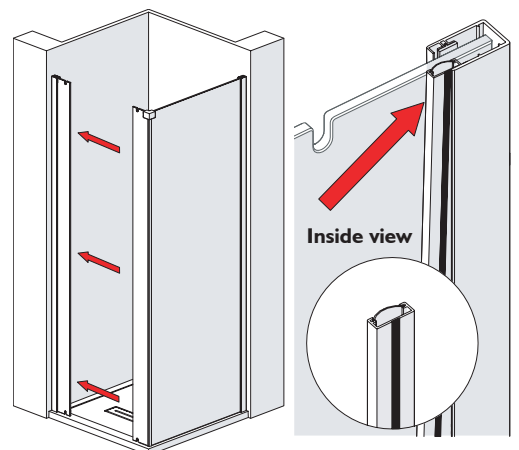


Step 8 - Fit Second Panel Glass

1. Like step 4, carefully fit glass panel into slot in wall post, ensuring panel is parallel to tray edge.

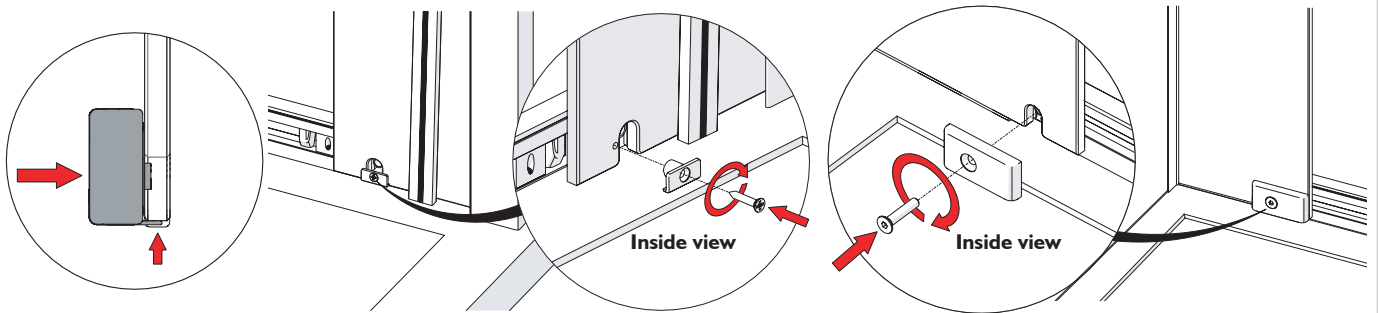
2. Secure Panel using the remaining Push-in channel. Remove the protective sleeve on the push-in channel extrusion. From inside the enclosure, place the push-in channel (black strip towards glass) against the glass. Again don't need to fully insert. Insert 1/4 at the top to secure glass panel whilst installing.

Push-in channel can be removed, if necessary, by inserting tool (M305-01) supplied to pull the channel out at top.



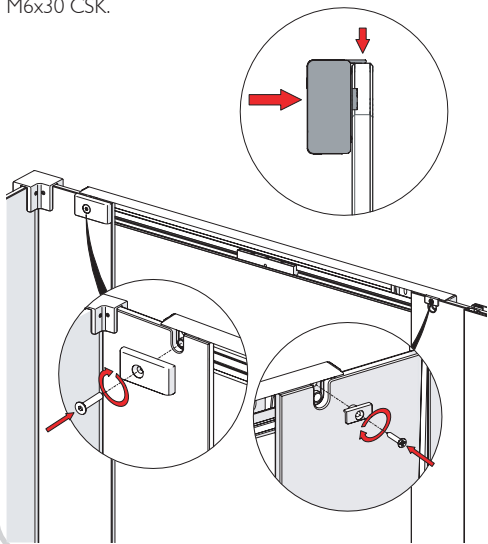
Step 10 - Fit Bottom Rail to Fixed Panels, Determine Opening Side

1. Acquire one of the rails. Outer extrusion to be on the outside of the glass. Line up the 2 holes on the rail with 2 slot/holes at the bottom of the glass. Ensure flange on rail is in contact with the bottom edges of the glass panel. Highlighted in the detailed diagram below.
2. Secure the rail with M144-02-AG using No.6x19 CSK. Apply to the end you intend the door to pivot/hinge from. Secure the opposite side with SF-BIF-CLMP-998 using M6x30 CSK.



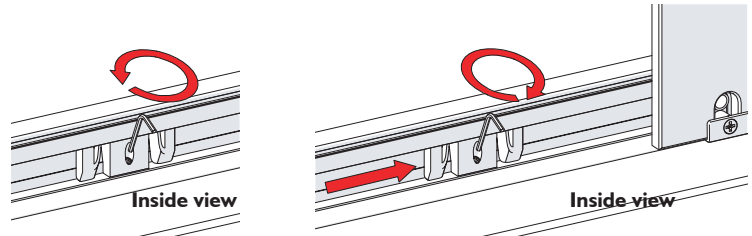
Step 11 - Fit Top Rail to Fixed Panels

1. Acquire the remaining last rail. Outer extrusion to be on the outside of the glass. Like step 7, line up the 2 holes on the rail with 2 slot/holes at the top of the glass. Ensure flange on rail is in contact with the top edges of the glass panel. Highlighted in the detailed diagram below.
2. Secure the rail with M144-02-AG using No.6x19 CSK. Apply to the end you intend the door to pivot/hinge from. Secure the opposite side with SF-BIF-CLMP-998 using M6x30 CSK.



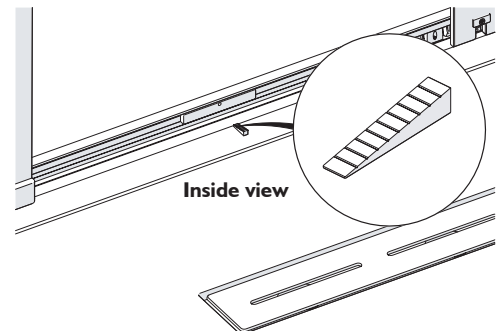
Step 12 - Set Guide Stoppers

1. Use the 2mm allen key provided to loosen the guide stopper. Once loosened 'slide' to the side with the M144-02-AG. Re-tighten once the guide is in a position similar to the diagram below. Do this for both bottom and top rail. Guides need to be on the same side.



Step 12 - Level Bottom Rail

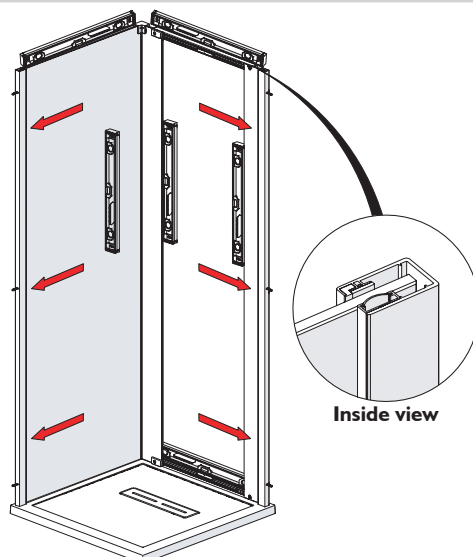
1. Often shower trays have different angled top faces, in order to help keep the frame supported use the 'Shim (M193-01)' supplied. On the inside of the enclosure measure the gap between the bottom of the rail and top of the tray, select the height required from the shim strip supplied, break off and insert under rail. The shim will be concealed by silicone sealant later.



Step 14 - Fully Insert Push-In Channels

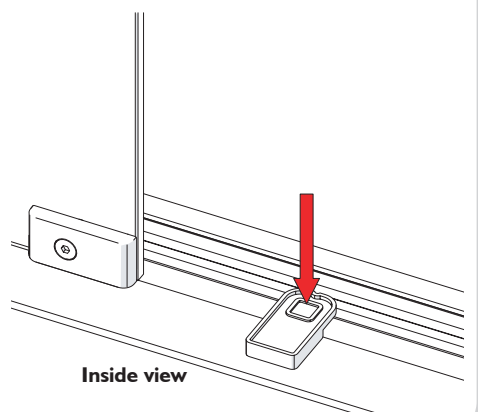
1. Remove the push-in channels previously inserted in step 3 and 8. Push-in channel can be removed, by inserting tool (M305-01) supplied to pull the channel out at top.
2. Ensure outer edge of the Glass Panels are vertical, as shown, using spirit level. Make sure the rails are also level.
3. Fully insert the push-in channel (black strip towards glass) against the glass, starting from the bottom, insert into wall posts. Ensure they are both fully inserted so that the channel is flush with the surface of the wall post along the entire height.

Drawn lines on the glass panels should not be visible beyond the wallposts after fitting push-in channels.



Step 15- Place Spacer

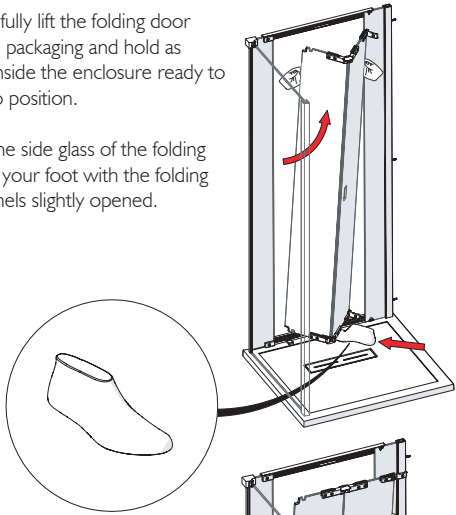
1. Place the small spacer block (M111-03) so that it is resting on the bottom rail approximately in the position as shown below. This will be used to rest the door glass in position while fitting.



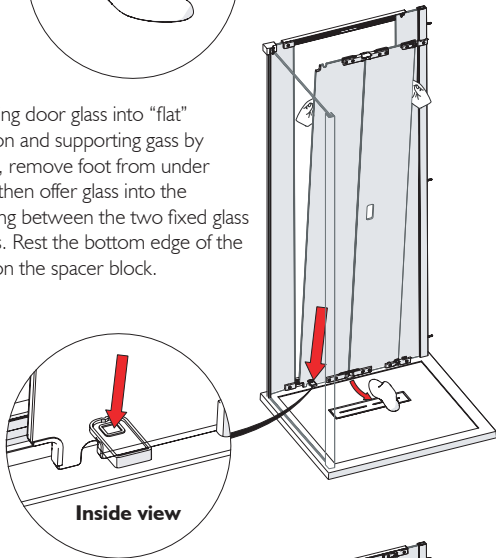
Step 16 - Fitting the door

1 a. Carefully lift the folding door from the packaging and hold as shown inside the enclosure ready to offer into position.

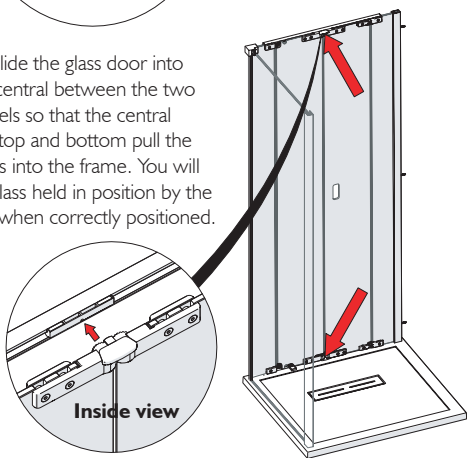
a. Rest the side glass of the folding door on your foot with the folding door panels slightly opened.



b. Swing door glass into "flat" position and supporting glass by hands, remove foot from under glass, then offer glass into the opening between the two fixed glass panels. Rest the bottom edge of the glass on the spacer block.



c. Now slide the glass door into position central between the two fixed panels so that the central magnets top and bottom pull the door glass into the frame. You will feel the glass held in position by the magnets when correctly positioned.



Step 19 - Adjust Slide Action

1. The sliding action should be smooth and running freely. If this is not the case, slacken the bottom slide then position slide as shown below. Now repeat for the top slide. This ensures there is no pressure on the rails from the slides.

Position slides as shown below. Slides should be set so as not to make contact with the rails at the top and bottom.

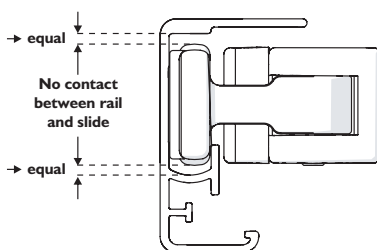
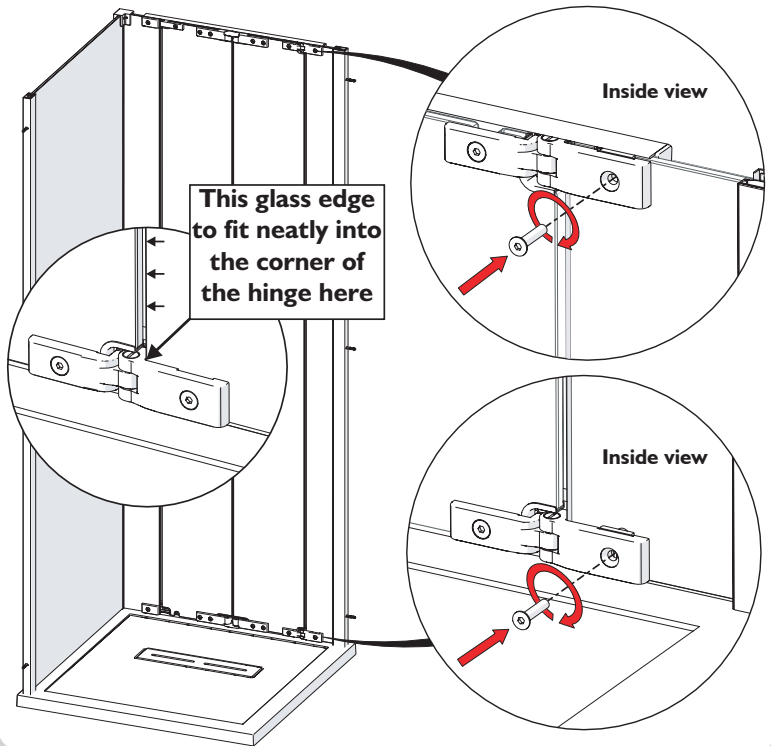


DIAGRAM OF TOP RAIL AND SLIDE SHOWING CORRECT SETTING

Step 17 - Secure Door Assembly

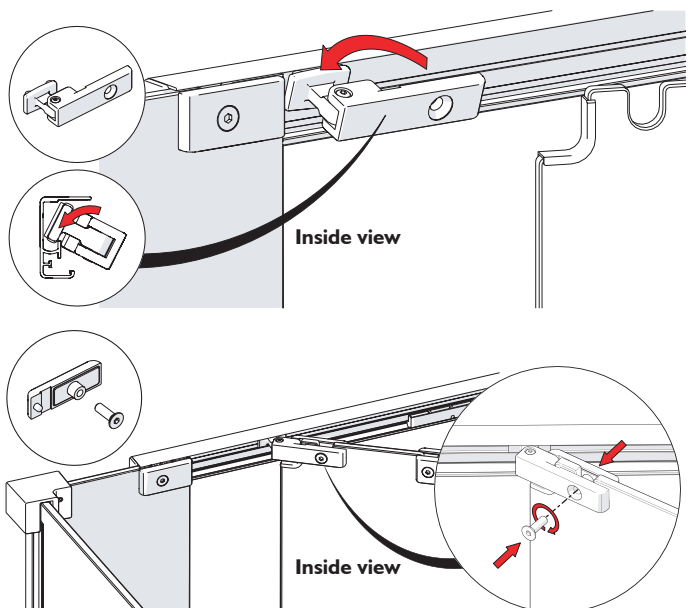
1. In order to position the door correctly, begin by moving the bottom hinge so that the fixed panel glass fits snugly into the corner of the hinge bracket as indicated.

With both hinges held firmly in position against the fixed panel glass, fit 1 X M6x30 CSK Hex Screws into the top hinge and fully tighten. Then fit 1 X M6x30 CSK Hex Screws into the bottom hinge and fully tighten. **Open the door and discard the spacer block.**



Step 18 - Fit the Slides

1. Acquire SF-BIF-SLID-998 from the installation pack and disassemble. Insert the top slide on the closing side of the door into the rail by tilting the slide and lowering the rectangular slide into the track of the rail. Tilt the slide and offer it into the rail as shown.
2. Now push up and into the Slide will run smoothly in the track when correctly fitted.
3. Position slide over centre of cut in glass and loosely secure with M6 X 16 Screw, do not fully tighten at this stage.

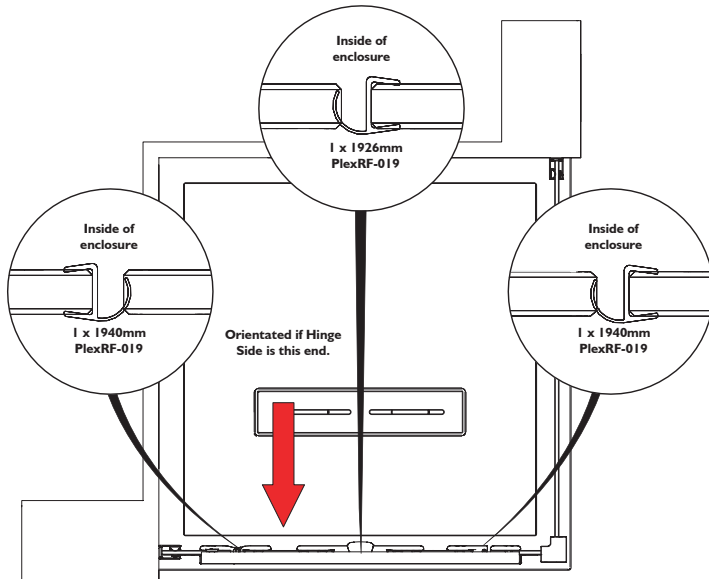


4. Repeat the above to fit the bottom slide.

Note: To allow smooth operation of the guides, apply Vaseline or appropriate lubricant to inside of both top and bottom rail.

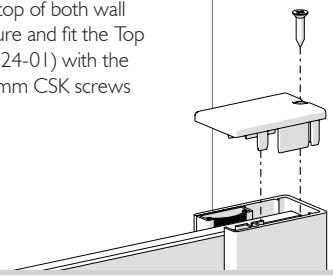
Step 20 - Fitting the Door Seals

1. There are two longer seals (2 x 1940mm) and one shorter (1 x 1926mm) similar to the diagram shown. The longer seals fit the the fixed glass panels either side of the door. From starting at the bottom, press these over the glass ensuring they are fully seated over the entire length between the top and bottom chrome castings.
2. Next fit the door closing seal at centre on the handle side.



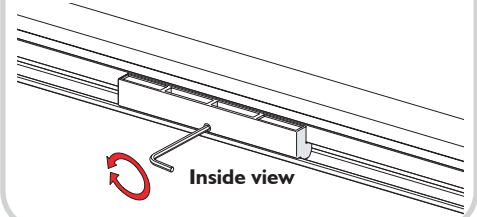
Step 21 - Fit Cover Caps

1. At the top of both wall posts secure and fit the Top Caps (M224-01) with the No.4x13mm CSK screws provided.



Step 22 - Adjust Closing Strength

1. The magnetic closing strength of the folding doors can be reduced if required. Using 2mm allen key supplied, loosen the grub screw in the top rail magnet and offset the magnet to one side, then re-tighten grub screw. Repeat for bottom rail magnet. Maximum offset adjustment is 10mm.



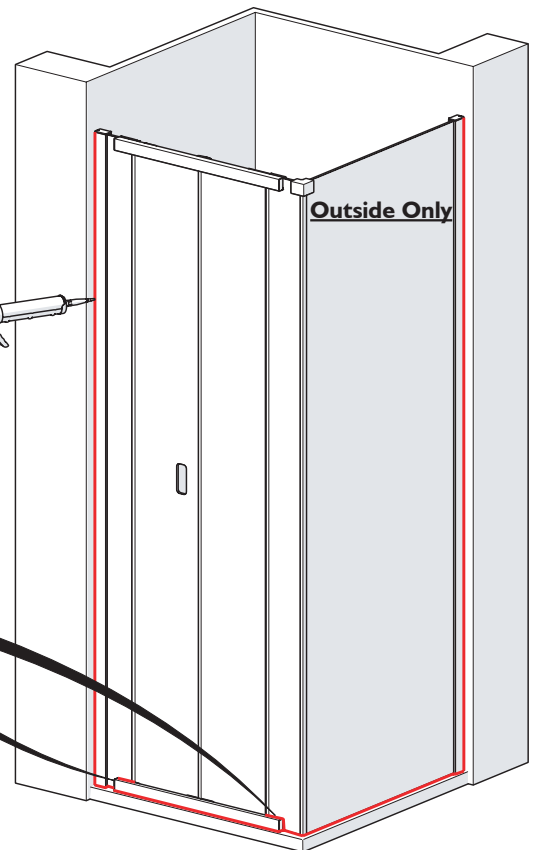
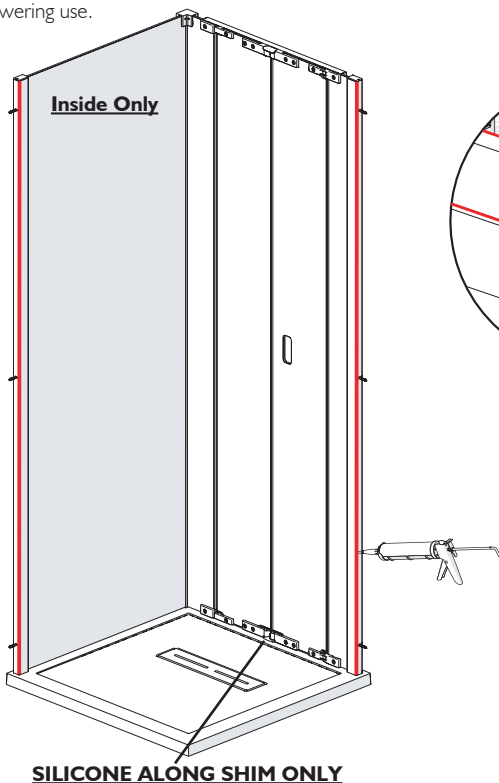
Step 23 - Seal the Enclosure

1. On the outside, silicone around all three junctions with the wall and tray, and also all the way round the bottom rail. On the inside, only silicone along the two vertical junctions with the wall. And along the shim only if used. Silicone seal where the fixed panels meet the rails, shown below.

2. Do not silicone seal on the inside of unit (except where shown). Sealing the wall posts & sills to the tray on the inside can result in leakage problems - please note that, in use, water can penetrate into the frame extrusions- this has no detrimental effect to the product- however, this water must be allowed to drain out of the extrusions to the inside. Silicone down the wall posts wall junction.

When installed correctly, Kudos guarantee the enclosure will not leak under normal showering use, ie. when the shower head is in it's normal showering position.

N.B. - Using the shower head to clean/rinse down the enclosure does not constitute normal showering use.



Step 24 - Wait 24hr

1. Allow 24 hours before using the shower.

