

Installation instruction



Two in One Wash Basin+Toilet



1, Fixed with one of flexi pipe



2, Fixed fix 2nd pipe with the flim and lap at the bottom



3, Tigten the lap and back nut

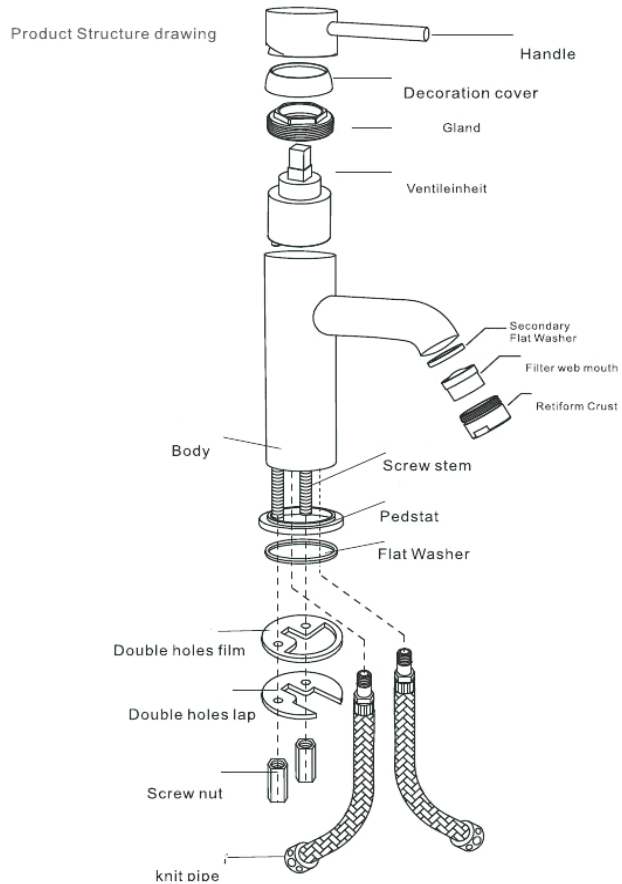


4, Tigten the cover

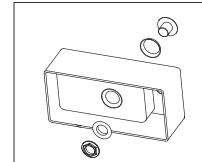


5, Finished

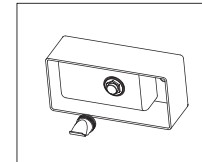
Mono Basin mixer installation instructions



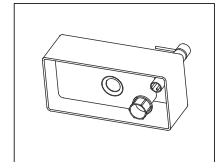
INSTALLATION OF 2 IN 1 WC & BASIN



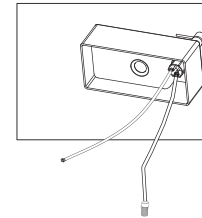
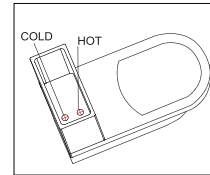
Step 1: Place and fix the waste and washer.



Step 2: Fit the Silicone sleeve on the bottom of the waste.



Step 3: Place the tap and tightly screw the fixing nut.



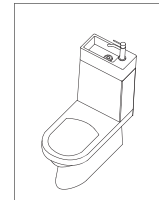
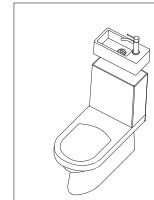
Step 4: Connect hot & cold water hose to the tap and connect the other end to outlet of the cistern.



Cold water

Warm water

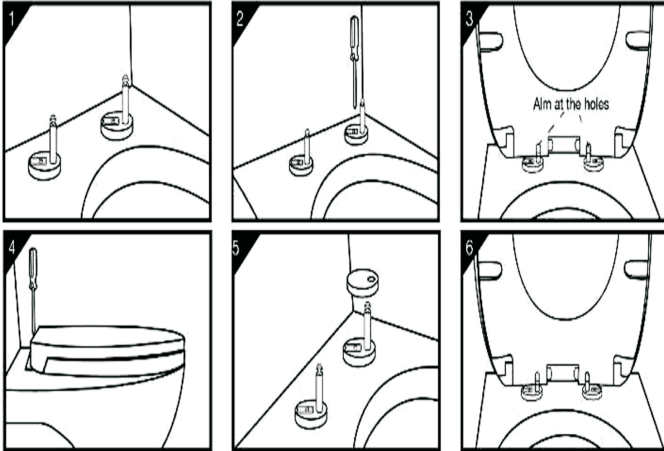
INSTALLATION OF WASH BASIN



Note: During installation, please ensure there is enough distance between the float of the inlet valve and the hoses, make sure there is no resistance to the normal operation of the inlet valve.

Installation Guide

There are three installation methods, Before Installation, please read the instruction carefully to know the installation methods of your toilet seat cover.



1. Insert the setscrew on the hinge base into the holes on the pan.

2. Tighten the setscrew but not to the end in order to adjust the seat cover properly.

3. Aim at the holes and adjust the hinge base to make

the seat cover and pan match. Take out the seat cover once the installation position is confirmed.

4. Fix the hinge base on the pan firmly.

5. Put the cap into the hinge base.

6. Fix the seat cover to the hinge base.

Basin waste installation instruction



1. Fixed the flim first and put in the hole

2. Fixed another flim at the bottom

3. Tighten the screw and finished